



CONTACT INFORMATION

Plymouth State University

Jessica Morel, Associate Director
The Bagley Center: Office of International Programs
17 High Street, MSC 44
(603) 535-2336
jmorel@plymouth.edu

CAPA

Student Services, Senior Program Manager, Erica Bonthron
Tel: (800) 793-0334
Fax: (857) 207-3324

See the Bagley Center contact above for application materials and important information about the Sydney Internship Program.

CAPA International Education

CAPA is a private organization that was founded in 1972. CAPA specializes in custom-designed programs for US institutions of higher education and also offers individual enrollment in academic courses, internships, and service learning programs. CAPA has centers in the UK, Spain, Italy, France, Australia, and Costa Rica where the core values of Academic Quality, Holistic Learning, and Health and Safety are fostered.

THE CAPA MISSION

Our mission has remained unchanged since 1972: to provide learning abroad opportunities which genuinely educate students and visiting faculty about the people and culture in which they are learning in an holistic educational environment.

Our programs weave experiential and academic learning together with internships, co-curricular activities and methods of instruction; these create a total learning environment, ensuring every student gains the deeper contextual relevance before, during and after their study abroad experience.

We believe that a student's intercultural awareness and self-confidence, as well as a genuine interest in their own education can be uniquely shaped while learning abroad. Over 50,000 students are alumni of the CAPA Organization. It is our belief that the experiences and lessons gained by your students on our programs will continue to bring new levels of curiosity and tolerance to the future generations of people they engage with.

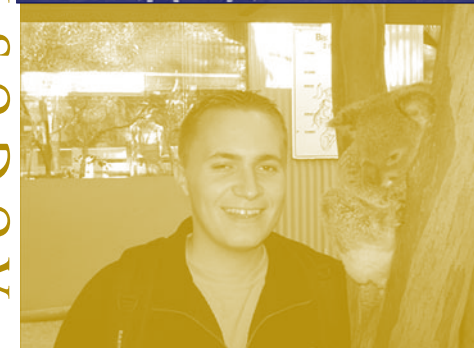
Live. Explore. Discover. Create. LEARN

DISCLAIMER:

This brochure is not a contract and is for informational purposes only. At the time of printing all program information is accurate, but subject to change. Please consult your on-campus contact for program details.

TAKING
HIGHER
EDUCATION
FURTHER

JUNE 4 - AUGUST 1, 2009



PLYMOUTH STATE
UNIVERSITY

presents...

*The Bagley Center: Summer Internship
Program Sydney, Australia*

JUNE 4 - AUGUST 1, 2009

ACADEMICS

Internship 30 hours per week/ 4 days per week

Available to all PSU matriculated (degree-seeking) students with a 2.50 cumulative GPA at time of application.

Students will be taking a course called Perspectives on Experiential Learning Abroad (PELA) along with the internship. This course explores the world of work and how students respond to the challenges that they can expect to encounter. The internship experience is central to this analysis as a benchmark, but a broader perspective will be employed to explore social, cultural, political, environmental, and technical influences. The course meets for two hours per week and focuses on the following topics: cultural analysis, communication skills, organizational analysis, personal development, and ethical issues in the workplace.

**"This was the best experience
of my life and I even came away from it
with a job offer!"**

*Joshua Fisher, B.S. Meteorology '09
Summer 2008 Sydney intern, The Weather Company*



ACCOMMODATIONS

CAPA houses students in a variety of student residences throughout Sydney. While they vary in terms of style, location, and amenities, they all meet the following standard requirements: located no more than 40-minute commute via public transportation from the CAPA Sydney Center, single beds/ bunk beds, a place to store your clothes, whether it be shelves or a closet, access to a kitchen equipped with basic cookware and utensils- this may be within the individual unit or within the building and shared with other students, and a bathroom with shower- within the individual unit or within the building and shared with other students.

Housing information and assignments will be sent to the PSU Bagley Center 14 days prior to the start of the program. Your Bagley Center advisor will communicate this to you.

Students will be invoiced separately for a \$150 refundable security deposit.

The balance of your security deposit (less any charges for damages, missing items or utility overages) will be refunded to you within 45 days of the last day of the program.

EXCURSIONS

ORIENTATION TOUR: Local arrival walkabout tour after the Host-Culture orientation.

INDEPENDENT TRAVEL: Use your free weekends to travel. CAPA International Education's local staff will assist you in choosing destinations and transportation. Student favorites include Perth, Fraser Island, the Great Ocean Road, the Great Barrier Reef, and New Zealand.

FLIGHTS

You are responsible for purchasing round-trip airfare, making sure that your flight arrives in Sydney on June 4, 2009. There is no housing available to students if you arrive before this date.

Summer 2008 airfare prices ranged from \$1,800 to \$2,700 from Boston Logan International to Sydney Airport.

PAYMENT INFORMATION

PROGRAM FEES - Summer 2009

\$5,507* per student **+ resident or non-resident PSU tuition and fees**

*Based upon a minimum of 10 participants; this price may change depending on enrollment

6 credits**, PSU Resident Tuition & Fees = \$308 per credit (\$1848)
6 credits, PSU Non-resident Tuition & Fees = \$336 per credit (\$2016)

**Students may register for fewer credits but program dates and fees remain constant

Included:

- Group transfers to/from overseas airport
- Arrival reception
- Departure ceremony
- Medical and travel insurance
- A Sydney red transportation pass (submit 2 passport-size photos)
- Tuition and fees (see breakdown above)

Not Included:

- Round trip airfare
- Passport and visa fees (approximately \$100)
- Personal expenses, including meals
- Refundable housing security deposit of \$150
- Anything not specified as included in the program



PAYMENT SCHEDULE

Application and non-refundable \$300 deposit due **February 27, 2009**.

Confirmation deposit of \$500 due April 1 in the Bursar's Office.

At this time, discuss payment arrangements for the final balance with the PSU Bursar's Office.

*All payments should be made payable to Plymouth State University.

\$150 refundable housing deposit due May 5, 2009 to CAPA.

FINANCIAL AID

Financial Aid is available from Plymouth State University to students enrolled in a minimum of 6 credits.

The FAFSA is due at the federal processor by March 1. Apply on-line at www.fafsa.ed.gov

For additional loan assistance, notify the Financial Aid Office 6-8 weeks prior to needing the funds.

Access fastWEB at www.fastweb.com to electronically search for outside scholarships you may be eligible to receive.

Financial Aid Contact:

June Schlabach
Director of the Financial Aid Team, PSU
Phone: (603) 535-2338
Contact: www.plymouth.edu/finaid

See your Bagley Center advisor for a 'Program & Cost Summary' form before you schedule an advising session with Financial Aid.

HOW TO REGISTER

Applications due by Friday, February 27, 2009

For the following majors only: *Business, English Writing, Geography, Environmental Planning, Graphic Design (BFA), Childhood Studies, Women's Studies, and Music, Theatre & Dance* - You must follow all Bagley Center registration guidelines and all departmental requirements for your internship as outlined in the course catalog. At the time you submit your application and deposit, you will be scheduled for an intake interview at the Bagley Center. This interview must take place before March 13, 2009 to be considered.

For all other PSU Internship courses, please work with your faculty coordinator from your major's academic department to ensure appropriate approval.

Program Reference Code 090604NHPLYSYD

Please include this reference code on all correspondence.

Passport Information/Fees

Please provide two copies of your passport photo page once you have received your passport to The Bagley Center for your file.

For new U.S. Passports, the application may take up to 12 weeks (or longer). See the Bagley Center for more information about this process and to obtain a passport application and passport photos.

Please see the following Web site for the most up-to-date information: http://travel.state.gov/passport_services.html

VISA Registration/Fees

Students who are U.S. citizens and staying in Australia for less than 3 months will need an ETA (electronic travel authority), which is available through ETA online.

This is your Australian "visa", or permission to reside in the country for the duration of your internship.

Check with the Bagley Center for more information on how to obtain an ETA.

