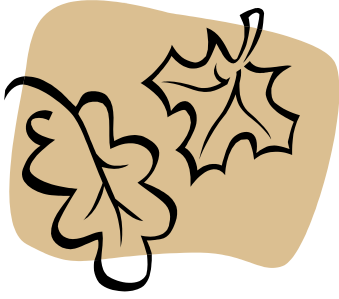


Stall Street Journal

Volume 4 Issue 3

www.plymouth.edu/finaid

Financial Wellness Newsletter



FALL INTO F-U-N



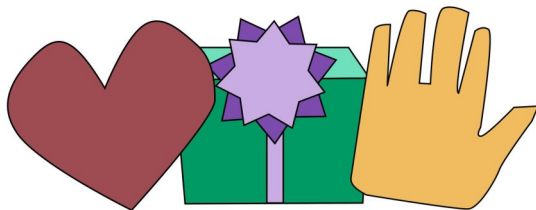
Homecoming, Hiking, Pumpkin Carving,
Apple Picking, Fairs, and so MUCH more!

To be Fun-nancial

During the Fall there is an abundance of things that are free or low cost and still F-U-N!



There are homecoming events throughout the week of Sept. 27 - Oct. 3, apple picking, hiking, sightseeing, and fairs galore in the months of September and October. To find an Apple Orchard check out www.nhfruitgrowers.org/. If you're into a hike or want to peep at some leaves check out www.mountainfoliage.com. For info on NH Fairs go to www.nhfairs.com/fairdates.htm. If you just want to look into information on a local event, www.visitnh.gov, which is a wonderful website for any NH fun! All of these ideas are free or at a lower cost! Look around for prices, be smart at using your money at fairs, it could be expensive, and remember there shouldn't be a hole burning in your pocket!



Gifts from Heart and Hand
PLYMOUTH STATE UNIVERSITY

SAVE
THE
DATE

Save the Date for Heart and Hand!

Heart and Hand will be held on Monday, November 15th, 2010, from 11am to 6pm in the Hage Room (Formerly the Multi-Purpose Room) in the HUB!

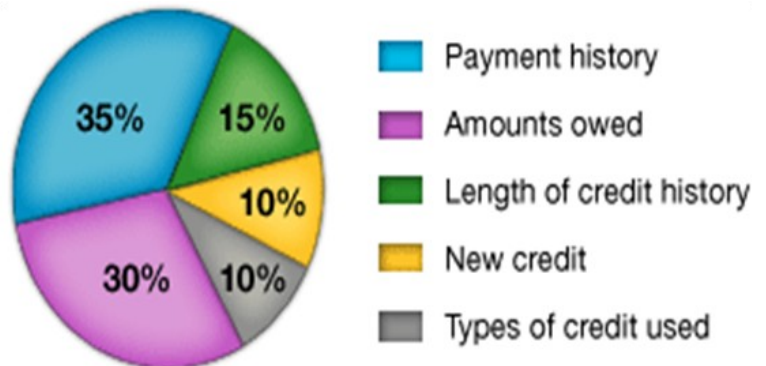
More info. will be available closer to the date.

Update Your Info Now is a great time to check your FAFSA (Free Application for Student Aid) information and make sure everything is up to date. You should look at your mailing address along with your email address. You should only change the data if your addresses have changed. Remember January 1st is the start of when you can file your 2011-2012 FAFSA!

Five Ways to Improve Your Credit Score

1. Make your payments on time.
2. Do not sign up for new and unnecessary credit cards.
3. Try to keep your account balances low. For example try not to exceed 30-40% of your credit.
4. Do not apply for several new cards at once. Many credit inquiries can negatively impact your credit score.
5. Work on paying off your debt rather than just moving it around.

What's In Your Score?



Come Visit The PSU Financial Aid Team! Located on the garden level of the Speare Building, Room 108.

Open: Mon, Tue-8:30am to 4pm Wed-10am to 4pm Thur, Fri-8:30am to 4pm
Call at 603-535-2338 or Fax 603-535-2627