

How to use your BinaxNOW card, and how to report your results

Contents of your Kit

The BinaxNOW system is easy to use. It is a “lower nostril” swab test and everything you’ll need in order to successfully swab and test yourself is included in the test kit you were provided. You should have:

- Two swabs
- Two test cards
- 1 bottle of reagent (this may also be 2 small disposable droppers)

Note, you will only use one swab and test card for each self-administered test. The other, unused, supplies you will save for subsequent testing.

Precautions and Preparation

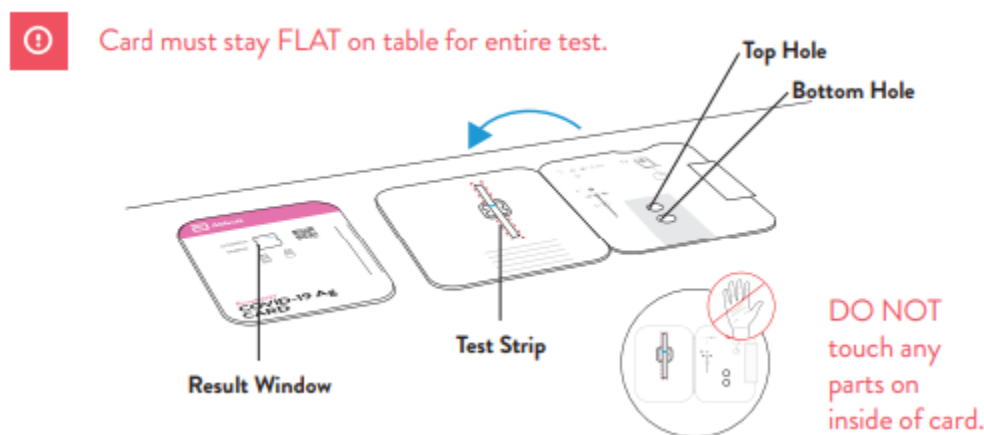
When using the BinaxNOW kit, you will want to prepare and follow a few precautions in order to achieve the most accurate results from the kit.

- Do not open the card, reagent, or swab until you are ready to use them.
- Thoroughly wash and dry your hands before you use the kit.
- Do not mix components from different kits. If you are missing a kit or its components, Plymouth State will replace them for you at Health Services.
- Do not re-use parts of the test kit. They are one-time only.

¹Using the BinaxNOW card

When you are ready to take your self-administered COVID-19 test, follow these directions:

1. Open the card. Please make sure that the card lays flat for the entire test. It is also important that you do not touch any of the parts on the inside of the card.



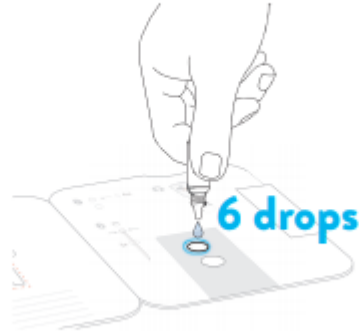
¹ Images and some textual elements from [BinaxNOW COVID-19 Ag Card Home Test – Instructions for Use](#), Abbott Laboratories, 2021

2. Open the reagent bottle (or disposable dropper) and apply the fluid to the TOP HOLE on the right-hand side of the opened test card. Make sure you use 6 DROPS of reagent fluid. If you don't, your results will not be as accurate.

A. Remove dropper bottle cap.

B. Hold dropper bottle straight over TOP HOLE, not at an angle.

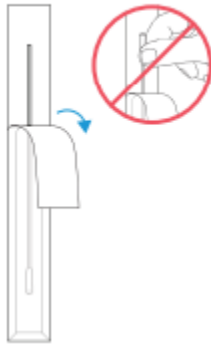
C. Put 6 DROPS into TOP HOLE. Do not touch card with tip.



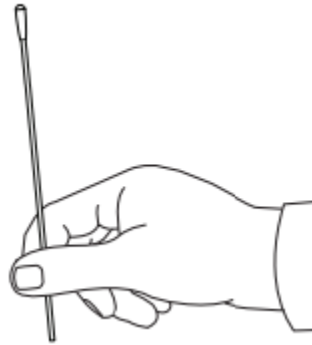
Note: False negative results may occur if less than 6 drops of fluid is used.

3. Open the swab at the stick end. Make sure not to touch the absorbent tip of the swab.

A. Open swab package at stick end.

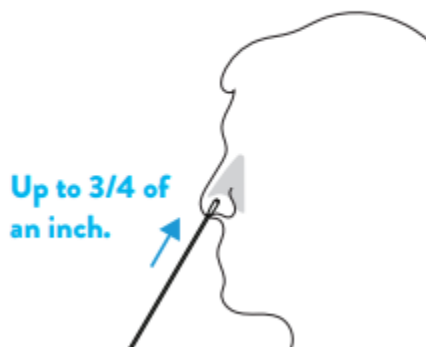


B. Take swab out.



4. Insert the absorbent tip of the swab fully into your left nostril. You will likely have to insert it $\frac{1}{2}$ to $\frac{3}{4}$ of an inch. Brush the swab against the sides of your nostril in a circular motion at least five times.

A. Insert the entire absorbent tip of the swab (usually $\frac{1}{2}$ to $\frac{3}{4}$ of an inch) into left nostril.



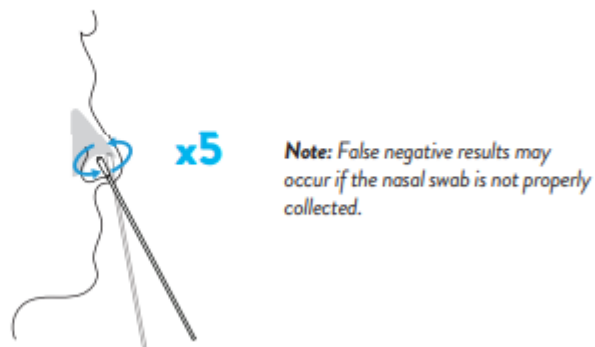
B. Firmly brush against insides of nostril in a circular motion 5 times or more for at least 15 seconds.



5. Remove the swab from your left nostril, and repeat the same process with your right nostril, brushing the swab against the sides of your right nostril in a circular motion at least five times.

A. Remove swab and insert it into right nostril.

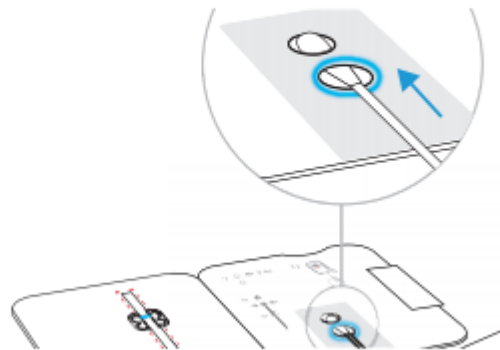
B. Firmly brush against insides of nostril in a circular motion 5 times or more for at least 15 seconds.



6. Making sure to keep the BinaxNOW card flat on the table, insert the absorbent tip of the swab into the BOTTOM HOLE and push on the stick until the absorbent tip appears and fills the TOP HOLE.

ⓘ Keep card **FLAT** on table.

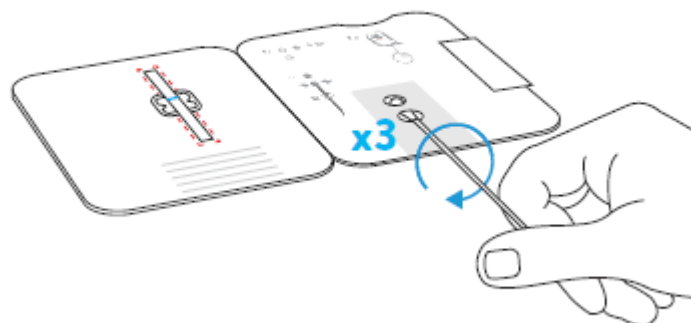
Insert swab tip into **BOTTOM HOLE** and firmly push up until tip fills **TOP HOLE**.



7. While keeping the card flat on the table, rotate the swab a full 360 degrees, three times.

ⓘ Keep card **FLAT** on table.

Turn swab to right 3 times in card and leave it in place.



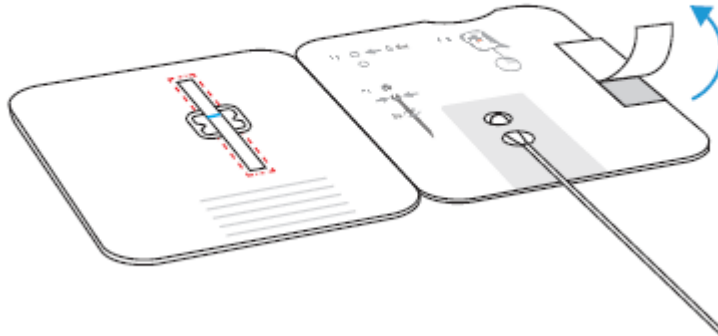
Note: False negative results can occur if the sample swab is not turned prior to dosing the card.

8. While keeping the swab in place, and making sure to keep the card flat on the table, remove the cover to the adhesive strip on the right hand side of the card.

DO NOT remove swab.

Keep card FLAT on table.

Keep swab in place. Peel adhesive liner off.

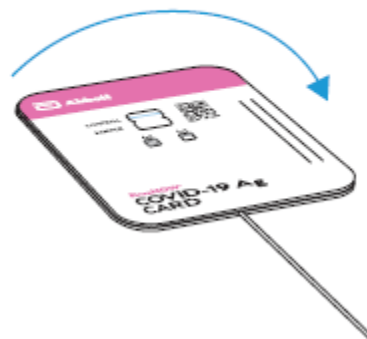


9. While still keeping the card flat on the table, close the left side over the right side as if closing a book. Press slightly on the far-right side with the adhesive to ensure the card seals.

DO NOT remove swab.

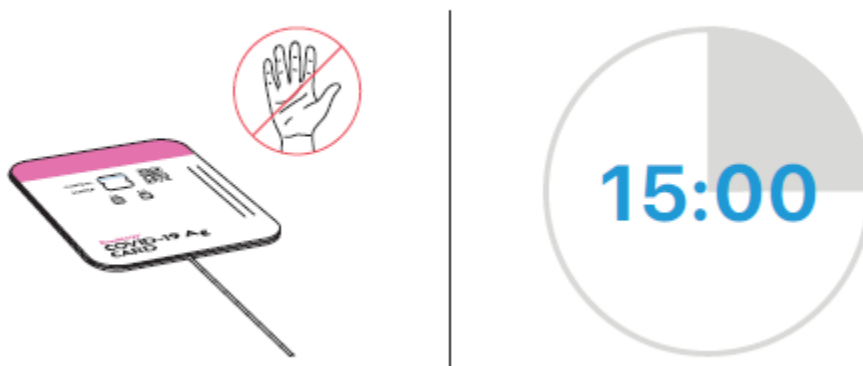
Keep card FLAT on table.

Close left side of card over swab to seal it. Keep card face up on table.



10. Set a timer for 15 minutes, or mark the time on a clock/watch and let the card sit, undisturbed.

DO NOT disturb card during this time.



Note: False results can occur if the card is disturbed/moved or test results are read before 15 minutes.

11. After 15 minutes have passed it is time to read and interpret your results. Three types of results are possible with the BinaxNOW kit. Positive, negative and Invalid. A **POSITIVE** result is made when two pink/purple lines are seen in the window. Note that sometimes the lower line (the sample you took) can be rather faint. Photos of actual positive results are below.

RESULT INTERPRETATION

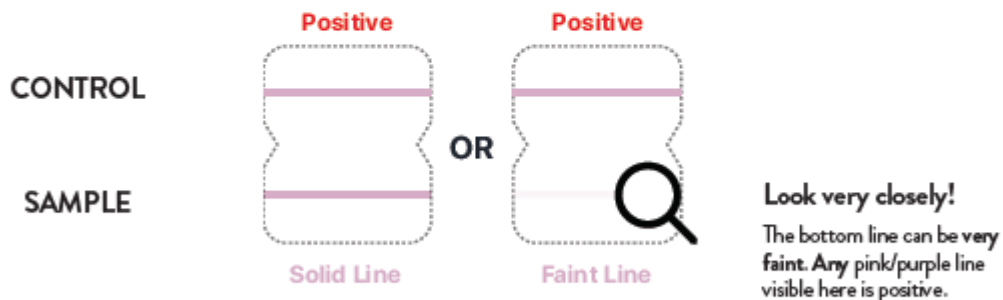
There are three types of results possible. You will be instructed how to read each type in a specific order. Follow this order with your proctor:

1. Check for a Positive Result
2. Check for a Negative Result
3. Check for an Invalid Result

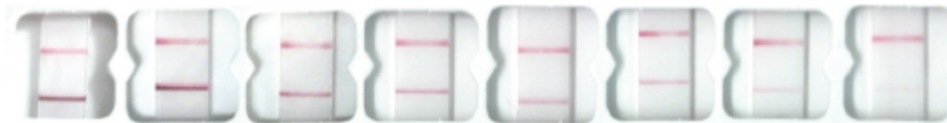
Check for Positive COVID-19 Result

Find result window and look carefully for two pink/purple lines in window.

- **Positive Result:** Two pink/purple lines will appear. One on the top half and one on the bottom half. **COVID-19 was detected.**

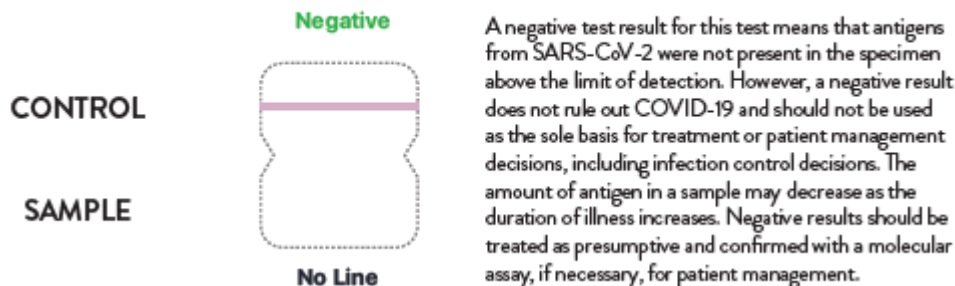


Here are photos of actual positive tests. On the right, note how faint the bottom line can get.

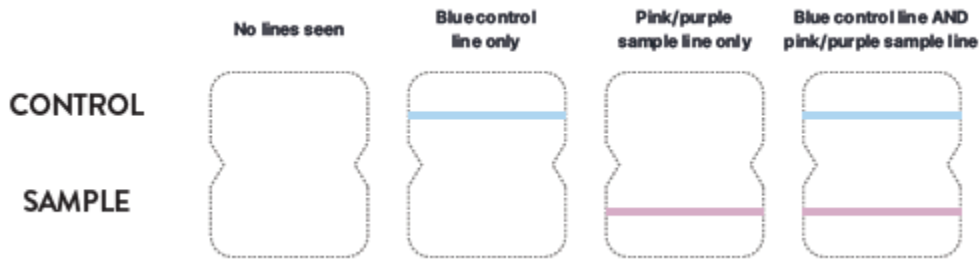


A **NEGATIVE** result is determined if only the top pink Control line is visible, as shown below.

- **Negative Result:** A single pink/purple line on the top half where it says "Control." **COVID-19 was not detected.**



12. Any other result is considered an **INVALID** result.



13. Leaving the swab in place, write your Name, the current date and your Plymouth State ID number on your now used BinaxNOW card.



14. Place your used BinaxNOW card, with the stick still inserted, next to your Plymouth State ID card, and take a picture of them both, in the same image.



15. Open a web browser on the mobile phone you used to take the image with, or a computer to which you uploaded the image, and navigate to [this](https://forms.office.com/Pages/ResponsePage.aspx?id=kxgk1i1R3EaNK75H4I9WZtI_6PfgFK9CvLvLhcG25s1UM081NTFESOpLMVINWkZVOVVBUEQWDM1Vi4u) link. You will be prompted to enter your PSU username and password (https://forms.office.com/Pages/ResponsePage.aspx?id=kxgk1i1R3EaNK75H4I9WZtI_6PfgFK9CvLvLhcG25s1UM081NTFESOpLMVINWkZVOVVBUEQWDM1Vi4u).

16. Enter your First Name, Last Name, and ID number, and whether you are a student or an employee in the appropriate spaces on the form. Enter the date you performed the test, upload the picture you took of you Plymouth State ID and the test, and click the radio button corresponding to the result of your BinaxNOW test.

The image displays three sequential screenshots of a mobile application form titled "Binax Test Submission".

- First Screenshot:** Shows the form header and three required input fields:
 - 1. My first name is * (Text input: Robert)
 - 2. My last name is * (Text input: Frost)
 - 3. My PSU ID is * (Text input: 999999)
- Second Screenshot:** Shows the continuation of the form:
 - 4. I am a * (Radio buttons: Student, Employee, Other)
 - 5. The date I performed the test was * (Date picker: Please input date (M/d/yyyy))
 - 6. Please upload the picture of your ID and BinaxNOW card (Non-anonymous question) * (Upload file button)
- Third Screenshot:** Shows the final question and submission button:
 - 7. The result of my test was * (Radio buttons: Negative, Inconclusive, Positive)
 - Submit button

17. If your test result was positive, you will be presented with another question asking the best telephone number to contact you at, as soon as you click the "Positive" radio button.

The image shows a screenshot of the mobile application form where the "Positive" radio button for question 6 is selected. Below this, question 7 asks for the best number to call/text, with a text input field and a "Submit" button.

18. Click "Submit" at the bottom of the form and your results will be automatically entered. If your test result was positive, you can expect a call from Plymouth State's Rapid Response team. You can now dispose of the used BinaxNOW test in your regular trash. You have completed your BinaxNOW test!