



Baccalaureate of Science in Nursing



Nursing Student Handbook 2025-2026

Plymouth State University provides equal opportunity and affirmative action in education and employment for qualified persons regardless of race, color, religion, sex, national origin, age, disability or veteran status. Registration at the University assumes the student's acceptance of all published regulations, including those that appear in this and all other publications. Plymouth State University reserves the right to make changes in curricula, degree requirements, course offerings, and all regulations when in the judgment of the faculty, the Chancellor, the President and Board of Trustees if such changes are in the best interest of the students and the University. The Baccalaureate of Science in Nursing Program Faculty reserve the right to review and make recommendations to revise this handbook annually. Should there be significant changes in policies and guidelines, students will be given copies of the changes. The PSU Nursing Student Handbook is supplemental to the PSU Academic Catalog.

Bachelor of Science in Nursing Program

Nursing Program

Phone (603) 535-2115 & Fax (603) 535-2117

<https://www.plymouth.edu/health/program/bs/nursing>

Updated August 2024 JF

Faculty and Staff

Karen Coughlin
Academic Operations Manager

Donna Driscoll, DNP, RN, CEN
Clinical Professor
Director of Nursing

Julie Cote, DNP, RN, CNE, MBA
Clinical Assistant Professor

Julie Fagan, EdD, MSN, RN
Clinical Associate Professor

Candace Knowlton, MSN, RN
Clinical Assistant Professor

Chantal LaPlante, MSN, RN, CNL
Clinical Assistant Professor

Tracia O'Shana, MSN, APRN
Clinical Associate Professor

Kerri Reynolds, DNP, MSN, RN, CNE
Clinical Associate Professor

Clinical Instructors and Teaching Lecturers

Cori Elliott, APRN

Sandra Johnston, MSN, RN

Emily Kelly, APRN

Michaela Patenaude, BSN, RN

Kristin Peterson, BSN, RN

Michael Stone, BSN, RN, CNOR

Accreditation

The Bachelor of Science in Nursing Program at Plymouth State University is accredited by the Commission on Collegiate Nursing Education (<http://www.aacnnursing.org/CCNE>).

Approval

The Plymouth State University Department of Nursing Bachelor of Science in Nursing Program has full approval of the New Hampshire Board of Nursing. <https://www.oplc.nh.gov/new-hampshire-board-nursing>

Welcome to Plymouth State University's Nursing Program

Welcome to the wonderful world of nursing!

As you embark on the journey toward becoming a professional nurse, Plymouth State Nursing will be here to guide you through the process. The role of the nurse is more than a job, it is a profession that embodies a contract with society to provide safe, evidence-based, compassionate care to all patients, in all settings.

While at PSU, you will learn the science and the art of delivering nursing care. We, the nursing faculty and staff, will guide you through the hard work of acquiring vast knowledge of the human condition while coaching you to listen to the patient's story. We will join you in your journey, celebrating the success and supporting you during the challenges. We wish you well.

Let the journey begin!

Donna

Dr. Donna Driscoll DNP, RN, CEN
Director of Nursing
Plymouth State University

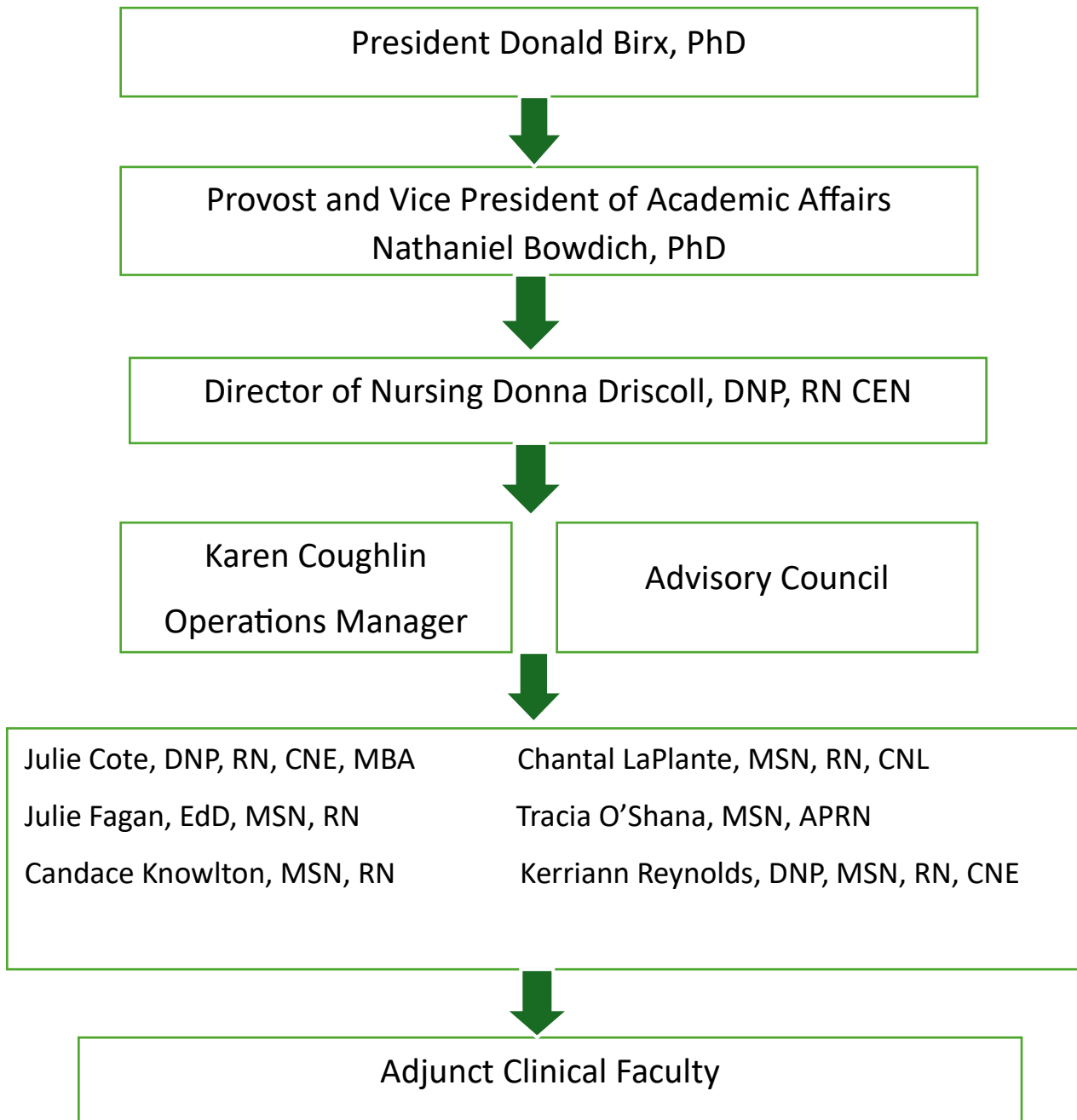
SECTION I: NURSING PROGRAM	5
Organizational Chart	6
Mission, Vision, Nursing Program Philosophy & Goals, Cluster	7
Program Goals	7
End of Program Outcomes	8
Organizing Framework	8
The Nine Essentials of Baccalaureate Education	9
SECTION II: PROGRAM INFORMATION	11
Bachelor of Science in Nursing Curriculum	12
Student Organizations/Committees	13
Student Awards	13
SECTION III: POLICIES AND PROCEDURES	15
Core Performance Standards and Functional Abilities	16
Student Behavioral Expectations	17
Inclement Weather Policy	17
Advisement Policy	17
Admission Policy (includes Transfer and Pre-nursing)	18
Grading, Progression, Readmission Policy and Algorithms	19
Attendance Policy and Clinical Absences	23
Assignment and Exam Policy	23
Grievance/Formal Complaints	24
University Policies	24
Clinical/Practicum Nursing Requirements	24
Simulation Lab Guidelines	27
Impaired Nursing Practice	28
Professional Appearance Policy	30
Confidentiality Policy	31
Position on Unsafe Practice in Clinical	31
Unusual Occurrence in Clinical	31
Risks for Body Fluids Exposure Policy	32
Cellular Phone and Electronic Devices Policy	32
Assessment Technologies Institute (ATI) Policy	32
Medication Administration Competency Policy	37
Clinical Remediation Program	37
Student Administration of IV Medications in Clinical	38
SECTION IV: GRADUATION AND LICENSURE	39
Licensure	40
SECTION V: APPENDICES	41
Appendix A: ANA Code of Ethics	42
Appendix B: Exam Item Appeal Form	43
Appendix C: Unusual Occurrence Report Form	44
Appendix D: Root Cause Analysis Form	45
Appendix E: COVID-19 Policy	47
Appendix F: Respirator Policy	48
Appendix G: Travel Policy	53
Professionalism Rubric	54
Clinical Remediation Referral	55
Student Acknowledge of Handbook	56

Section I

Plymouth State University
Nursing Program



Nursing Program Organizational Chart



Nursing Program Mission, Vision, Program & Educational Philosophy, Cluster

Mission

The Nursing Program's mission is to provide nursing curricula that supports excellence in nursing education. We educate future nursing leaders to provide innovative, high quality, accessible health care to the geographic regions of Plymouth and beyond, connecting with local and global health care communities. We teach practices that promote the health and well-being of diverse individuals, families, communities, populations, and systems. We graduate competent nurses who make sound clinical judgments, communicate effectively, and make decisions using the best evidence available, to practice in an interdisciplinary global healthcare environment

Vision

The Nursing Program's vision is to prepare nurses to deliver patient-centered care as members of an interdisciplinary team, emphasizing teamwork and collaboration, safety, evidence-based practice, quality improvement, and informatics.

Program Philosophy

The Plymouth State Nursing Program derives its philosophy from the Plymouth State University values and motto, *Ut Prosim: That I May Serve*. The Nursing Program embraces innovative and creative approaches to interdisciplinary, culturally sensitive nursing practice. The faculty believe the purpose of a collegiate undergraduate education is to prepare the professional nurse whose practice is informed by theory and research to positively impact communities. The philosophy is further grounded in the competencies defined by the Nurse of the Future literature (MA Dept. of Higher Education, 2010) and the American Association of Colleges of Nursing (AACN) Essentials of Baccalaureate Education.

Educational Philosophy

The PSU Nursing Program provides a supportive learning environment for nursing students in the classroom, clinical arena, and the greater community. The pursuit of a career in the profession of nursing implies a spirit of life-long learning; in that vein, the Nursing Program seeks to partner with students and communities of interest to create a mutual teaching and learning continuum wherein we all learn from each other. This spirit of inquiry is encouraged through discovery of the arts and sciences of nursing, using a problem-solving approach, whereby students and faculty alike find meaning in their nursing practice, within a framework of mutual respect. The essence of nursing lies in service to people in need; the PSU motto embraces this spirit of service to our community.

Cluster Affiliation

Plymouth State Nursing is in the Health & Human Enrichment Cluster.

Program Goals

Based on the Mission, Vision, and Philosophy of the Nursing Program, the following program goals have been identified. The program goals of the nursing program are to:

1. Prepare graduates to provide safe, evidence-based, patient-centered care that reflects ethical clinical judgement and inter-professional collaboration (NoF: Patient-Centered Care, Evidence-Based Practice, Teamwork and Collaboration, Safety) (EPO: 1, 4, 5, 6) (Essentials: I, II, III, IV, V, VI, VII, VIII, IX)
2. Provide an innovative program of study that is responsive to the changes in the healthcare environment (NoF: Quality Improvement) (EPO: 1, 2, 3, 4, 5, 6, 7, 8, 9, 10) (Essentials: I, II, III, IV, V, VI, VII, VIII, IX)
3. Promote collaboration and partnerships within the communities of New Hampshire and the world beyond (NoF: Teamwork and Collaboration) (EPO: 2, 3, 4, 5, 6, 8, 9, 10) (Essentials: II, V, VI, IX)

4. Develop students' critical thinking skills, to solve problems encountered on the work unit, considering the health care system's technological resources, agency policies, and client/family needs, to deliver quality care. (NoF: Systems Based Practice & Informatics) (EPO: 2, 3, 4, 5, 6, 7,9) (Essentials: I, III, IV, V, VIII, IX)
5. Promote effective communication across all nursing practice settings, considering psychosocial, physiological, developmental, spiritual, cultural and educational concerns, in order to support positive client outcomes. (NoF: Communication & Leadership) (EPO: 1, 3, 4, 5, 8, 9, 10) (Essentials: I, VI, VII, IX)

End of Program Outcomes

At the end of the baccalaureate nursing curriculum, graduates will:

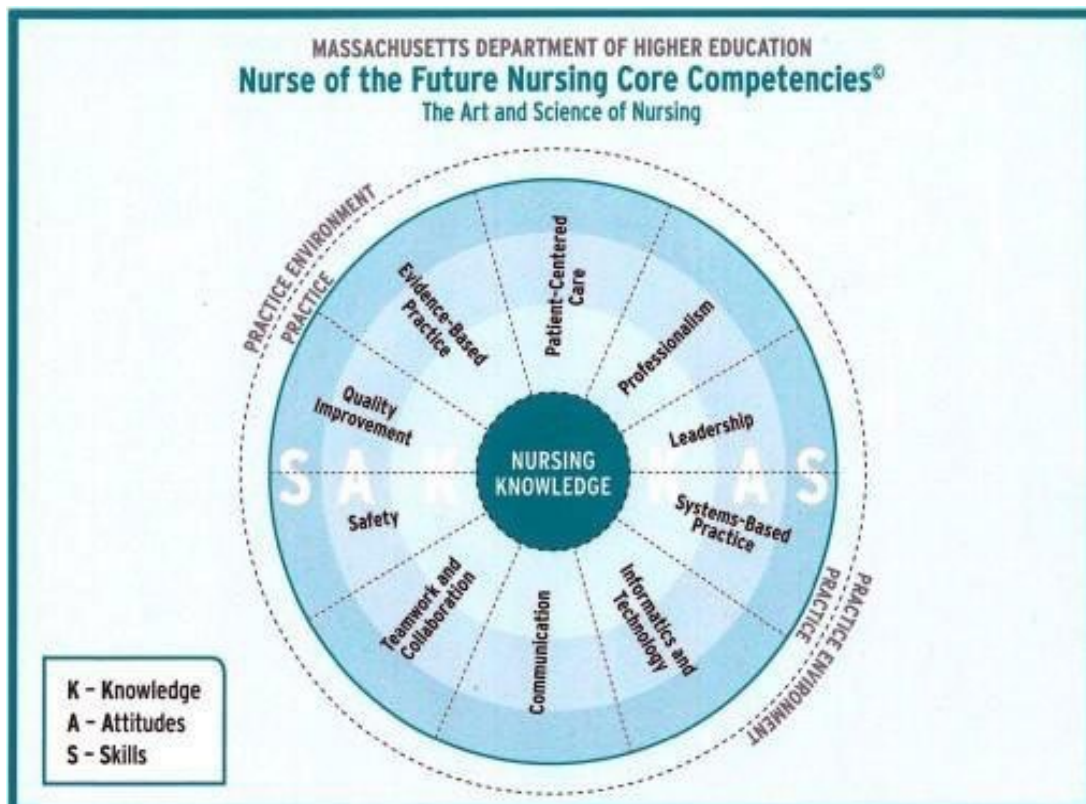
1. Demonstrate accountability for practicing nursing within established moral, legal, ethical, regulatory, and humanistic principles.
2. Demonstrate an awareness of and responsiveness to the larger context and system of health care and the ability to effectively call on system resources to provide care that is of optimal quality and value.
3. Use information and technology to communicate, manage knowledge, mitigate error, and support decision-making.
4. Identify, evaluate, and use the best current evidence coupled with clinical expertise and consideration of patients' preferences, experience and values to make practice decisions.
5. Function effectively within nursing and interdisciplinary teams, fostering open communication, mutual respect, shared decision making, team learning, and development.
6. Minimize risk of harm to patients and providers through both individual performance and system effectiveness.
7. Use data to monitor outcomes and care processes and use improvement methods to design and test changes to continuously improve the quality and safety of health care.
8. Influence the behavior of individuals or groups of individuals within their environment in a way that will facilitate the establishment and acquisition/achievement of shared goals.
9. Deliver holistic nursing care and advocate for health promotion and disease prevention strategies at The individual, family, community, and global levels. Demonstrate effective communication skills with clients that foster mutual respect and shared decision making to enhance patient satisfaction and health outcomes.

Organizing Framework

The organizing framework of the nursing curriculum is derived from the philosophy and rooted in the competencies defined by the *Nurse of the Future*:

- Patient-Centered Care
- Evidence-Based Practice
- Teamwork and Collaboration
- Quality Improvement
- Leadership
- Informatics
- Professionalism
- Communication
- Systems-Based Practice
- Safety

The curriculum of the Nursing Program reflects these competencies as well as professional nursing standards and guidelines. The curriculum incorporates knowledge and skills of both the standards of the American Nurses Association (Scope and Standards of Practice), the Essentials of Baccalaureate Education in Professional Nursing, AACN, Quality and Safety Education for Nurses, and the Nurse of the Future ©.



https://www.mass.edu/nahi/documents/NOFRNCompetencies_updated_March2016.pdf

The Nine Essentials of Baccalaureate Education

Essential I: Liberal Education for Baccalaureate Generalist Nursing Practice

A solid base in liberal education provides the cornerstone for the practice and education of nurses.

Essential II: Basic Organizational and Systems Leadership for Quality Care and Patient Safety

Knowledge and skills in leadership, quality improvement, and patient safety are necessary to provide high quality health care.

Essential III: Scholarship for Evidence Based Practice

Professional nursing practice is grounded in the translation of current evidence into one's practice.

Essential IV: Information Management and Application of Patient Care Technology

Knowledge and skills in information management and patient care technology are critical in the delivery of quality patient care.

Essential V: Health Care Policy, Finance, and Regulatory Environments

Healthcare policies, including financial and regulatory, directly and indirectly influence the nature and functioning of the healthcare system and thereby are important considerations in professional nursing practice.

Essential VI: Interprofessional Communication and Collaboration for Improving Patient Health Outcomes

Communication and collaboration among healthcare professionals are critical to delivering high quality and safe patient care.

Essential VII: Clinical Prevention and Population Health

Health promotion and disease prevention at the individual and population level are necessary to improve population health and are important components of baccalaureate generalist nursing practice.

Essential VIII: Professionalism and Professional Values

Professionalism and the inherent values of altruism, autonomy, human dignity, integrity, and social justice are fundamental to the discipline of nursing.

Essential IX: Baccalaureate Generalist Nursing Practice

The baccalaureate graduate nurse is prepared to practice with patients, including individuals, families, groups, communities, and populations across the lifespan and across the continuum of healthcare environments. The baccalaureate graduate understands and respects the variations of care, the increased complexity, and the increased use of healthcare resources inherent in caring for patients.

Section II

Program Information

Nursing Course Sequencing Grid

*Pre-requisite	**Co-requisite	Taken	Credits	Semester/Total Credits
BI 2110 Human Anatomy/Physiology I *			3	
BI 2130 Human Anatomy/Physiology I Lab*			1	
IS XXX The Wicked Problem			4	
PS 2015 Intro to Psych *			4	
Directions			3	
Directions			3/4	Semester Credits 16 or 18
SEMESTER 2 SPRING-Y1		RUNNING TOTAL:		
BI 2120 Human Anatomy/Physiology II *			3	
BI 2140 Human Anatomy/Physiology II Lab*			1	
MA 2300 Statistics I *			3	
EN 1400 Composition *			4	
Directions			4	Semester Credits 14 or 15
SEMESTER 3 FALL-Y2		RUNNING TOTAL:		
PS 2055 Life-Span Development			4	
NR 2100 Foundations of Professional Nursing			3	
NR 2300 Biochemistry for Nurses			3	
Directions			3/4	Semester Credits 13 or 14
SEMESTER 4 SPRING-Y2		RUNNING TOTAL:		
BI 2340 Microbiology for Nurses			4	
NR 2750 Pathophysiology			4	
NR 2550 Health Assessment			3	
Directions or Elective			3/4	Semester Credits 14 or 15
SEMESTER 5 FALL-Y3		RUNNING TOTAL:		
NR 3020 Intro to Patient Centered Care (DICO)**			3	
NR 3150 Pharmacology			4	
NR 3052 Clinical Applications of Patient Centered Care**			4	
NR 3095 Evidence Based Practice Mental Health Nursing			2	
NR 3700 Clinical Applications of Psychiatric Mental Health Nursing			1	Semester Credits 14
SEMESTER 6 SPRING-Y3		RUNNING TOTAL:		
NR 3035 Nursing Care of Children**			2	
NR 3135 Clinical Applications of Pediatric Wellness and Illness**			1	
NR 3077 Clinical Applications of Community Based Care			1	
NR 4020 Global Health & Population Based Health Care (GACO)			3	
NR 3070 Health and Wellness of Older Adults (WECO)			3	
NR 3550 Clinical Applications of Health and Wellness of Older Adults...			2	
NR 4600 Leadership, Collaboration, & Quality Health Care Systems (TECO)			3	*Offered in Fall and Spring
Elective or INCP			3	Semester Credits NR Courses = 15-18
SEMESTER 8 FALL-Y4		RUNNING TOTAL:		
NR 4000 Evidenced Based Practice in Med Surg Nursing**			4	
NR 4015 Maternal Newborn Care**			2	
NR 4100 Clinical Applications EBP Med Surg Nursing**			3	
NR 4150 Clinical Applications of Maternal Newborn Care**			1	
NR 4310 NCLEX-RN Success I			1	
NR 4600 Leadership, Collaboration, & Quality Health Care Systems (TECO)			3	*Offered in Fall and Spring
Elective or INCP			4	Semester Credits NR Courses = 14-18
SEMESTER 9 SPRING-Y4		RUNNING TOTAL:		
NR 4500 Nursing Leadership for Acute Care Nursing (INCO)**			3	
NR 4060 Research Process & EBP (QRCO) WRCO)			3	
NR 4360 NCLEX-RN-Success II			2	
NR 4082 Clinical Applications of Leadership & Quality Improvement**			6	Semester Credits 14
		RUNNING TOTAL:		Total Credits
DIRECTIONS HOME/GENERAL ED COURSES – NOT Science Directions			OTHER COURSES to Meet 120 Credit Graduation Requirement	
Minimum of 16 credits required and 4 credits under each category			INCP - Required – List Course Below	
Gen Eds	Course ID	Credits	Credits	
CTDI			Electives to reach 120 credits	
PPDI				
SSDI				
Choice				
Choice				

Student Organizations and Committees

PSU Student Nurses Association

Student nurses are encouraged to participate in professional nursing organizations and activities. Time and location of membership meetings are determined by the Executive Board. At each annual March meeting of the Student Nurses Association, new executive board members will be elected. The Association updates and maintains their constitution in accordance with university and national standards. The current constitution can be reviewed through the Plymouth State University Student Organization office.

The Student Nurses Association participates in local and national events including Convention. Please see the travel policy listed in Appendices Section V.

Student representatives to the Curriculum Committee (one from each class is encouraged) are selected through the Student Nurses Association and represent the student body as liaisons regarding the nursing program curriculum. Liaisons are asked to take an active role in shaping the curriculum and the voice of the liaisons is a valued aspect in decision-making. The executive board members are also part of the Nursing Program Advisory Board.

Sigma Theta Tau International Eta Iota Chapter

Mission

The mission of the Honor Society of Nursing, Sigma Theta Tau International (STTI) is advancing world health and celebrating nursing excellence in scholarship, leadership, and service.

Vision

The vision of the Honor Society of Nursing, Sigma Theta Tau International is to be the global organization of choice for nursing.

Membership to Eta Iota at Large Chapter is open to students enrolled in the Plymouth State University undergraduate nursing program, and who meet the following criteria, are invited to join.

- a. Have completed $\frac{1}{2}$ of the nursing curriculum
- b. Achieve academic excellence (at schools where a 4.0 grade point average system is used, this
- c. equates to a 3.0 or higher)
- d. Meet the expectation of academic integrity

Student Awards

The Academic Excellence Award is awarded to a graduating student with the highest overall GPA

The Clinical Excellence Award is awarded to a graduating student who:

- Establishes caring interpersonal relationships with clients
- Functions as a client advocate in clinical interventions
- Displays a knowledge base necessary for strong critical thinking behaviors in client interactions
- Displays creativity during clinical experiences
- Exhibits a high degree of clinical accountability and responsibility
- Provides clinical role modeling behaviors for peers
- Possesses strong communication skills in the clinical setting
- Exhibits leadership skills in peer and community relations

The Nurse of the Future Award is awarded to a graduating student who demonstrates the following:

- Exemplary knowledge, skills, and attitudes as they relate to all of the nurse of the future competencies
- Strong leadership skills that can influence future nursing workforce force initiatives. These may include:
 - Service in leadership capacities in the Student Nurses Association
 - Service in Nursing and University Committees
 - Community activities, leadership, support, and sharing of special expertise with student peers
 - Other activities that represent service and commitment to the betterment of society and their chosen profession

Nursing Faculty Award for Outstanding Achievement

- Goes to a student who has overcome personal and/or academic challenges and blossomed as a student of nursing at Plymouth State University
- The deserving student of this award has not only engaged in but has taken charge of their own learning, utilized campus and community resources to their fullest potential, and demonstrates a passion for nursing in his or her academic and personal endeavor

The Director's Award is awarded to a graduating student by the Director of Nursing with input from the faculty. The student will:

- Exemplify outstanding academic and professional achievement
- Be a senior student anticipating completion of degree requirements
- Have outstanding overall academic and clinical achievement
- Exhibit leadership in pre-professional (e.g., leadership in the Student Nurses Association; service on department or college committees; community activities) or professional activities (in the case of RN students, New Hampshire Nurses Association or other nursing specialty activities; nursing service to the community)

SECTION III

POLICIES & PROCEDURES

Core Performance Standards and Functional Abilities for Admission in the Bachelor of Science in Nursing Program

All applicants and continuing students must meet the core performance standards and functional abilities.

Standard 1. Critical Thinking and Mental Abilities: Must have critical thinking ability sufficient for clinical judgment. Examples of necessary functional abilities associated with this standard include (not an all-inclusive list): Has the ability to interpret, investigate, communicate, and comprehend complex situations; identify cause and effect relative to clinical situations; ability to make decisions and assess situations under varying degrees of stress; must be able to read and comprehend detailed charts, reports, journal articles, books, etc.; capable of performing all arithmetic functions (addition, subtraction, multiplication, division, ratios, and simple algebraic equations).

Standard 2. Communication and Interpersonal Abilities: Must be able to read, write, speak and comprehend English with sufficient skill to communicate effectively verbally and nonverbally. Must have interpersonal abilities sufficient to interact with individuals, families, and groups from a variety of social, emotional, cultural, and intellectual backgrounds. Examples of necessary functional abilities associated with the standard include (not all-inclusive): Has the ability to establish rapport with clients and their families, peers, agency personnel, and faculty; explain treatment procedures; initiate health teaching; and document and interpret nursing actions and client responses.

Standard 3. Physical Abilities: Must have sufficient physical abilities to move from room to room and maneuver in small spaces and gross and fine motor abilities sufficient to provide safe and effective nursing care. Examples of necessary functional abilities associated with the standard include (not all-inclusive): able to move around in client's room, work spaces, treatment areas and administer CPR; calibrate and use equipment; position and transfer clients; capable of lifting up to 50 pounds independently; capable of pushing up to 200 pounds independently; capable of reaching 18 inches above head without the use of mechanical devices to elevate themselves; capable of sitting, standing, walking for extended periods of time; experience no limitations when bending, stooping, sitting, standing, walking (i.e., uses no mechanical devices to assist themselves which would impede the safety of a client); ability to move to and respond to an emergency situation in a timely manner; and able to document in a clear legible manner.

Standard 4. Hearing: Must have sufficient auditory ability to monitor and assess health needs. Examples of necessary functional abilities associated with this standard include (not all-inclusive): Able to hear auscultator sounds, monitor alarms, and emergency signals; able to hear soft whispers of clients and families; able to tolerate loud noise for extended periods of time. Assistive devices must correct hearing to this degree and must be worn at all times during clinical practice.

Standard 5. Vision: Must have sufficient visual ability for observation, assessment, and intervention necessary for nursing care. Examples of necessary functional abilities associated with this standard include (not all-inclusive): Observe client responses, accurately read equipment, gauges, and monitors; vision correctable to 20/40, normal depth perception, and ability to distinguish colors; and ability to tolerate offensive visual situations.

Standard 6. Smell: Must have sufficient smelling ability to monitor and assess health needs. Examples of necessary functional abilities associated with this standard include (not-all inclusive): Have ability to differentiate between various types of smells and odors, and ability to tolerate offensive odors.

Student Behavioral Expectations

1. Student Code of Conduct

The Plymouth State University Nursing Program regards students as adults and expects them to accept responsibility for their behavior, whether acting individually or in a group. Students are expected to be considerate of the rights of others and conduct themselves in a manner that is consistent with the values embraced by the University and reflected in its various policies, contracts, rules, and regulations. Consumption of alcohol or use of tobacco products while in PSU Nursing uniform is prohibited. For information regarding student conduct please refer to: <https://www.plymouth.edu/Frost-house/student-rights-code-conduct>

- 2. PSU Nursing Program endorses a culture of civility and respect and expects students to display civil and professional behaviors at all times.** Student behaviors and/or performance should promote a healthy environment and not present a danger (or reasonable assumption of danger) to a student, person, client, patient, or faculty. Students should understand that their behavior in and out of the classroom will have positive and negative consequences for themselves and others. Students have a responsibility to:
- a. Take learning seriously: attend class, be prepared, participate in discussions, ask questions, and complete assignments on time.
 - b. Treat faculty, staff, and fellow students with respect (refer to Professionalism Rubric)
 - c. Contribute to the enrichment of the University and the larger community.
 - d. Protect and preserve property belonging to others and the University.
 - e. Be aware of how lifestyle choices affect academic success and personal growth.
 - f. Be knowledgeable of and comply with the University policies as outlined in the Student Handbook, University Catalog, and course syllabi.

3. Personal Responsibility

Each student must honor his/her responsibilities and modify behavior to be in compliance with the above stated expectations as requested by the institution and/ or members of this learning community.

Inclement Weather

In case of inclement weather, decisions about canceling or delaying classes will be made as follows:

- a. If classes are cancelled according to the PSU main website, then classes or clinical practica will be cancelled. Faculty reserve the right to hold class online and will notify students.
- b. If classes are delayed according to the PSU main website, then classes or clinical practica will be delayed as follows:
 - i. Class delays: In the event there is a delay of PSU classes, class will meet at the time PSU opens
 - ii. Clinical delays: In the event of a delay for PSU classes, clinical will meet at the time PSU opens
- c. If school is cancelled or delayed in the town that a clinical practicum is located, then the clinical practicum shall also be cancelled or delayed
- d. Faculty reserve the right to cancel or delay a clinical practica with consideration of safe travel
- e. In the case that students anticipate leaving for a clinical practica prior to an official announcement from PSU, the clinical instructor shall contact the students regarding cancellation of the practica if necessary
- f. Often nursing students are traveling, or preparing to travel, to clinical practica before inclement weather announcements are made. If a student perceives that the weather situation poses a threat to their personal safety the student has the right to determine that travel is unsafe and should contact their course instructor

Advisement Policy

The responsibility for completing requirements for the degree lies with the student. Students and their nursing advisor are responsible for evaluating progress toward the degree and for interpreting and applying major requirements. Each semester, students must consult with their advisor prior to registration. During the advising session, the student and nursing faculty advisor shall agree upon a planned schedule of courses to promote completion of the nursing degree in a timely manner. At that time, the student will also be given their personal PIN needed for course registration. For additional information about advisement policies, please refer to the PSU website: <https://www.plymouth.edu/academics/academic-career-advising-center>

Admission

Admission to the Nursing Program

Admission to the Nursing program is competitive and is not guaranteed. Students must be admitted to the University and to the Nursing program. The following criteria must be met to be considered for admission into the Nursing Program:

1. Completion of high school chemistry and biology courses
2. GPA of 3.0 in high school science courses
3. GPA of 3.0 or greater in all high school courses combined
4. Demonstration of math proficiency
5. Average to strong writing skills

Pre-Nursing Track

Students who are admitted to the Pre-Nursing Track as incoming first-year students:

1. Will be assigned to an academic advisor in the Allied Health major and/or ACAC
2. Will take courses required for progression in Allied Health and Nursing
3. Will transfer into Nursing for Fall of their second year without application if:
 - a. They successfully complete all pre-requisite courses for Nursing with a grade of B- or higher
 - b. They maintain a GPA of 2.67 or higher
4. Students will be notified of transfer into Nursing by the DON Director by June 15 for Fall semester
5. Students who do not meet the requirements for Nursing may choose to remain in Allied Health

Transfer Policy

This policy pertains to students requesting **internal transfer**, as a change of major, **external transfer**, from another institution, and students requesting **readmission**. Students requesting transfer should apply to the Nursing Program following these guidelines:

1. Transfer criteria must be met in order to be considered for admission
2. Applications are only valid for the year in which they are submitted
3. Students must meet all progression requirements to begin the nursing courses in the Spring or Fall of the year for which admission is requested
4. Students must achieve a grade of 2.67 (B-) in all pre-requisite courses prior to the semester of program entry
5. Transfer Application Process
 1. **Internal transfer applicants** and **students seeking readmission** must submit a letter of request, addressed to the APR Committee at psu-apnursing@plymouth.edu, by May 1st of the year requesting Fall admission, or October 1st requesting Spring admission
 2. **PSU alumni** must also contact the admissions office to discuss transfer credits
 3. **External transfer applicants** must submit all required documents by the May 1st or October 1st deadline addressed to the PSU Admission Office, including a letter of request that states why they want to transfer to Nursing at PSU
 4. In consideration of course content and sequencing in the PSU Nursing program curriculum, all NR courses taught by Nursing faculty must be completed at PSU. Students who take NR courses at another institution cannot transfer those credits to substitute for required NR courses at PSU. Any exception to this policy will be initiated by the PSU Nursing program faculty or Director and may require approval from the New Hampshire Board of Nursing
 5. The Nursing Admission, Progression & Retention (APR) Committee, applying a rubric, will review all transfer applications sent to psu-apnursing@plymouth.edu and PSU Admissions with selection based on:
 - A. Space available according to the following priority order:
 1. Students returning from an approved leave of absence (LOA)
 2. Internal transfer applicants and PSU alumni
 3. External transfer applicants
 4. Students applying for readmission
 - B. Meeting all progression requirements to enter the third nursing semester (transfers) or appropriate semester for readmitted students (see nursing curriculum grid)

- C. If two or more students meet all progression requirements equally and available space is limited, admission will be based on completion of all pre-requisite courses at time of application and cumulative GPA in all prerequisite science courses
- D. Internal transfer students can request to be placed on a waiting list for the Fall semester in the year they applied
- E. Applicants will be notified by June 15 of the decision for Fall admission or November 15 for Spring admission. Wait list students will be notified as spaces open up until the add/drop period closes in the semester for which they applied
- F. **Readmission decisions are final.** Students whose request for readmission is denied cannot submit a subsequent application to the APR Committee for readmission.

Grading/Progression/Readmission

1. Nursing Program Grading Policy

Letter Grade	Numeric Grade	Letter Grade	Numeric Grade
A	94-100	C	73-75
A-	90-93	C-	70-72
B+	86-89	D+	66-69
B	83-85	D	63-65
B-	80-82	D-	60-62
C+	76-79	F	59 and below

There will be no rounding up of grades. A grade of 80% (2.67) is the minimum passing grade for the nursing Program. All grades will be derived from a calculation out to two decimal places to the hundredth.

2. Student Progression

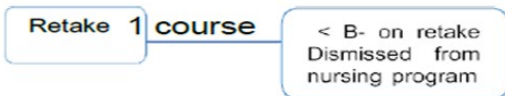
- A. Students must earn a minimum grade of B- (minimum numeric score of 80) in all Nursing prerequisite and required Nursing (NR) courses and a PASS in all NR clinical courses in order to progress in the program
- B. Students must earn a minimum grade of C in Composition
- C. A student whose grade is below B- in any prerequisite or NR course must repeat the course and earn a minimum grade of B- before enrolling in subsequent nursing courses (see E)
- D. If a student does not repeat the course with a minimum grade of B- prior to the start of the next sequenced course in the nursing curriculum, they will be dismissed from the Nursing major
- E. Students may repeat **one** prerequisite or NR course **one time** to earn a minimum grade of B- and apply for readmission to the Nursing major. Students may repeat A&P I or II and/or Lab I or II without applying for readmission in the first year of the Nursing program
- F. Students who do not earn the minimum B- grade in two prerequisite or NR courses will be dismissed from the nursing program and are not eligible to reapply. A&P Labs do not count as separate courses
- G. Students who do not meet the minimum B- grade in any NR course will be dismissed from the Nursing major and may apply one time for readmission if applicable (See Readmission Policy)
- H. Students who withdraw from a prerequisite or NR course after the first year will not progress in the Nursing program and must apply for readmission. Students who withdraw from more than one course (excluding A&P labs) or withdraw more than one time from any course (including A&P labs) will be dismissed from the Nursing program and may apply for readmission
- I. Students who repeat a prerequisite or NR course (including A&P labs) and earn a grade below B- on the second attempt will be dismissed from Nursing with no option to apply for readmission
- J. Students must complete the program of all required nursing courses within five years of commencing NR courses. Significant extenuating circumstances such as medical issues, family issues, LOA, etc. will be reviewed on an individual basis for exception



Nursing Program

**Progression Algorithm
Year One**

A&P I, II
Pscyh, Statistics
May repeat one course only. If
lower than B- on two courses
Dismissed

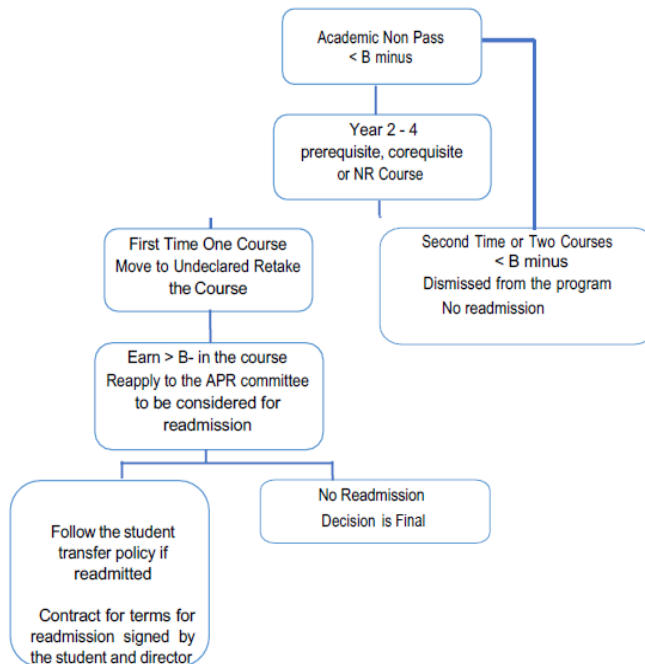


Must earn a B- or better on the course prior to Fall semester the next year.



Nursing Program

**Progression Algorithm
Years 2 - 4**



Readmission

Nursing students requesting readmission to the PSU Nursing Program following dismissal may apply to the Admission, Progression & Retention (APR) Committee **one time** to be considered for readmission. To apply, students must submit a letter to the APR Committee, formally requesting readmission to the program, and address the reason(s) for their dismissal and identify a detailed Success Plan for completion of the program if the student is readmitted.

- The Committee may require an interview with the student to review their proposals and explore the potential for their future success in the Nursing program. If the student is granted readmission to the Nursing program, certain conditions set by the APR Committee may apply
- If the APR Committee deems it necessary for the readmitted student to audit previously taken courses to support future success, the student is expected to complete the required audited course(s) with a grade of at least an 80.00 (passing grade for nursing courses), with all course requirements completed as described in the course syllabus
- Readmitted students are required to agree to all terms of readmission as stated in their readmission letter prior to readmission. The student will return a signed copy of the readmission letter to the Director of Nursing within 14 days after receipt of the readmission letter
- If the readmitted student fails to achieve a passing grade in any NR course(s), including audited and clinical courses, or fails to meet other stipulations for readmission, the student will be permanently dismissed from the Nursing program
- If a drug test is required for readmission or to meet clinical requirements and the results are positive or dilute negative, the test must be repeated within 24 hours of the results. If the subsequent result is positive or dilute negative, the student may be permanently dismissed from the Nursing program

Admission and Readmission Request Deadlines:

- May 1st for **Fall** re-entry
- October 1st for **Spring** re-entry

In addition to the above, the following conditions must be met:

- A course in which the student did not meet the minimum progression grade (B-) must be successfully repeated before enrolling in any subsequent nursing course
- Students who are granted readmission and subsequently fail to progress in the program will be permanently dismissed from the Nursing program
- A student reapplying to the Nursing program may additionally need to reapply to the University. Please see University readmission policies found in the Academic Catalog
- Students may reapply to the nursing program one time. If their readmission request is denied they may appeal to the Office of Academic Affairs

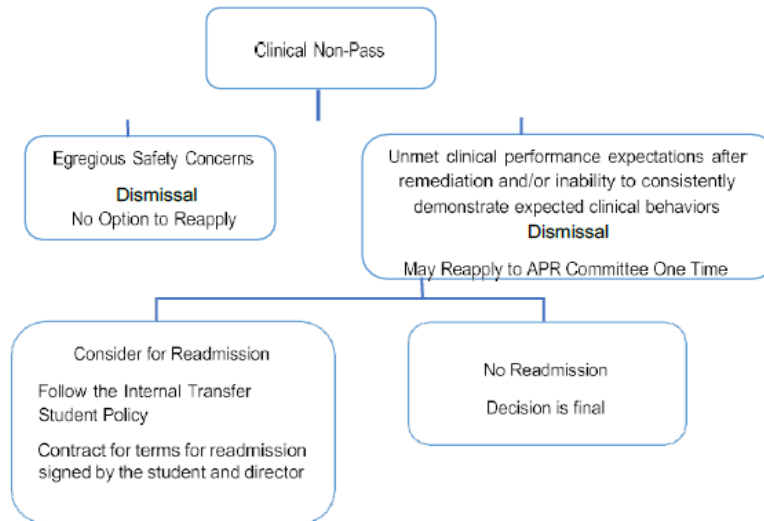
Progression in Clinical

All clinical courses are graded as Pass/Non-Pass. In order to progress, students must pass both the theory and clinical components of all courses with identified pre and co-requisites. Competencies identified in bold on all Clinical Evaluation Instruments are expected to be demonstrated at all times, and inability to demonstrate as such puts a student at risk of receiving a non-pass.

- If 50% of competencies are not met at the Developing or Satisfactory Level by the midsemester evaluation period, students will be considered 'at risk' of not passing and notified by the clinical instructor
- ALL competencies need to be met at the Developing or Satisfactory Level by the end of the clinical experience during the summative evaluation. Any student performing at the Need Improvement or Unsatisfactory level at the end of the assigned clinical hours will not pass that course
- Students may be dismissed from a clinical course and/or the Nursing program for egregious or repetitive safety violations or egregious or repetitive violations of professionalism (See Professionalism Rubric)



Nursing Program



Criminal Background Checks and Toxicology (Drug) Screenings

To participate in clinical practicum experiences due to agency affiliate agreements, criminal background checks and toxicology (drug) screenings are required prior to participation. Positive results for screening(s) or background checks may preclude students from participating in clinical experiences due to the Educational Agreements and federal laws, including the Controlled Substances Act.

- If a drug test result is positive or dilute negative, the test must be repeated within 24 hours. If the subsequent test is positive or dilute negative, the student cannot participate in clinical and may be dismissed from the program

The Clinical Warning Process is applicable to all clinical courses and clinical and lab attendance requirements.

- The faculty or preceptor communicates with the student regarding unmet clinical expectations and/or performance. Communication can be in the form of a verbal conversation or email
- If a student has not made the necessary adjustment to meet the clinical requirements within a specified time frame designated by the faculty, the next step is a verbal warning in the form of a conversation or email
- If the situation is not remedied by the student in a specified time frame designated by the faculty, the next step is a written clinical warning. This warning puts the student at risk of a non-pass in clinical if the situation is not remedied in a specified time frame designated by the faculty
- If a student receives a second written clinical warning, they will concurrently receive a non-pass for the clinical course
- Egregious safety concerns or disregard for nursing department or host institution policies precludes the warning process and is a clinical non-pass and potential dismissal from the program depending on the offense

Attendance Policy

Nursing students are required to adhere to University attendance policies. See current Undergraduate Academic Catalog for clarifications on excused and unexcused absences and policies regarding computing grades for unexcused absences.

- A. **Class Attendance:** Class attendance is expected for all PSU Nursing theory classes. Each faculty member is expected to clarify class attendance policies in individual course syllabi
- B. **Clinical and Lab Attendance:** It is expected that students will be present and on time at all scheduled clinical experiences. Clinical competencies and course objectives are achieved through clinical learning. Missing clinical time places the student in jeopardy of not meeting clinical objectives and therefore clinical course failure may result. The faculty recognizes that reasonable accommodation must be made for excused absences (see PSU Undergraduate Class Attendance Policy for definition of excused absence). A release from the student's healthcare provider stating that the student may resume clinical without restrictions (See Standard 3 under Core Performance Standards) is required if the student is absent for three (3) or more consecutive days, the absence required a hospital stay or surgical procedure, or for an official Medical Leave of Absence. SEE COVID-19 Appendix E

Assignment and Exam Policy

Assignment Due Dates

Assignments and presentations for Nursing class, lab, and clinical courses are due by the assigned deadlines as stated in the course schedules on syllabi and LMS. The faculty must approve any exception to the due date in advance. It is the expectation of each faculty member to clarify grading of late assignments in course syllabi

Examinations

Examinations will only be administered on the dates and times scheduled. In the event of extenuating circumstances, the course faculty must approve alternate exam times in advance. If a student is absent from an exam, the student may, at faculty discretion, be administered an alternate version and/or format exam that will assess the same content. Students who miss an exam for an unexcused absence are at risk for receiving a zero for that exam. All exams must be made up within 2 weeks of returning to class, and all subsequent exams will be administered as per the syllabus.

1. Personal items such as cell phones (which must be turned to silent), personal calculators, other electronic devices, handbags, backpacks (etc.), are not permitted to be on person during exam time, except with prior faculty or proctor approval. Students who violate this policy are at risk for receiving a zero for the exam.
3. **Students must have a laptop computer available to use for exams. Arrangements to borrow a computer through PSU Information Technology Department are the responsibility of the student in advance of the exam date. All faculty developed exams are administered using Respondus lockdown browser. All student computers used for an exam must have functionality to employ the Respondus program during the exam.**
4. Exams will be available for students to review with faculty throughout the course. Individual exam reviews are arranged through the course faculty, and the review format is at the faculty's discretion. Any exam review will occur after all students have taken the exam and the FINAL grades have been posted.
5. Students DO NOT have permission to copy or print questions or answers from any exam or quiz
6. Students earning less than 80% on an exam should meet with the faculty for an individual review of the exam

Exam Blueprint for NR Courses

- The number of exams with NCLEX-RN style exam items per course will be 2 (minimum), and all courses will have a cumulative final exam with NCLEX-RN style exam items. Exception: All clinical courses, NR 4600, NR 4060, or when indicated on the course syllabus
- Each nursing exam will have a minimum of 50 NCLEX-RN style exam items, and the final exam will have a minimum of 100 NCLEX-RN style exam items
- Exam grades will be weighted as follows
 - Unit Exams: combined weight will be between 50-60% of final grade calculation
 - Cumulative Final: weight be between 20-30% of final grade calculation
- The percentage of questions for each course/level of the program that will be written at the application or analysis levels are as follows:
 - 2000 level - at least 20%
 - 3000 level - at least 60%
 - 4000 level - at least 80%

Scoring Exams

- Exam results will be available to students no sooner than 24 hours after and no later than 3 days after the exam has been closed
- Partial credit will be given for alternate format items per NCLEX-RN guidelines
- Grades for course exams are not rounded
- All scores will be entered into the grade book to the second decimal point (hundredths)

Exam Review

Faculty have discretion review exams during class time, individually with students at a mutually agreed upon time, or by Exam Item Appeal.

- In order to ensure consistency for appealing exam items, students must use the Exam Item Appeal Form found in Appendix B and posted on the course LMS site
- Students must submit the appeal form to the faculty member who administered the exam within 24 hours of grades being posted. Submissions beyond 24 hours will not be considered
- The student must identify the **assigned course resource** that contains the answer they chose in the appropriate section of the appeal form by providing the title and the page or slide number. Appeals will not be considered without clear identification of the resource and specific information related to the exam item
- Each item under appeal must be placed on a separate form. Only one student may affix their name to each form. If more than one student wants to appeal a question, each student must submit a form. Faculty will not discuss the appeal with any student without the form being completed and submitted according to these guidelines
- Faculty have three days to respond to the appeal
- If the appeal leads to an item grade change, that change will be applied to all test takers

Grievance and Formal Complaints

The Nursing program policy related to student appeals, grievances, or complaints mirrors the University policies. Examples of University policies and procedures that may relate to formal complaints include Bias Incidence, Citizen Complaint Process, Fair Grading Policy, Grade Appeals, FERPA, and Sexual Misconduct Policy.

For complaints that do not fall into the categories above, students or constituents are encouraged to attempt to resolve the issue or concern with the individual involved. If the situation cannot be resolved by that means, or if the nature of the problem precludes discussion with the individual, the matter may be brought to the attention of the director of the Nursing program. The director will attempt to resolve the matter. If these meetings do not provide a satisfactory solution, the issue may be taken to the appropriate office, department, or committee for review.

University Policies

Students should refer to the PSU Academic Catalog pertaining to Academic Integrity requirements, Fair Grading, Grade Appeals, and FERPA Student Right to Privacy Policies, and Successful Completion and Graduation Requirements.

Clinical Requirements

Clinical Requirements and Documentation

Students must create an account through **Complio.com** for tracking of required documentation for clinical attendance. All documentation listed below must be uploaded to the student's Complio account by **June 1st** each year, except for flu shot verification. Students who miss the June 1 deadline will receive a verbal clinical warning. In addition, the delay will jeopardize their timely attendance in clinical which may risk dismissal from the nursing program. The cost for the basic clinical requirements is covered in the nursing program fees. Students incur the costs associated with any additional drug screening tests as required by the program or the clinical agency.

- **Proof of CPR Certification:** Basic Life Support (BLS) for the Healthcare Provider through the American Heart Association or the American Red Cross. The certification must be maintained for the entire time that the student is registered and attending clinical courses

- **Proof of Physical Exam:** Documentation must be provided annually using the Physical Exam Form provided in Complio under ‘Required Documents’
- **Proof of Health Insurance:** Personal health insurance is required for all nursing students while studying in the Nursing program
- **Proof of Immunizations**
 - **TB:** If you test negative for tuberculin exposure, you must submit a negative 2-step PPD (2 PPDs dated 7-21 days apart) **or** a negative IGRA (QuantiFERON or T-Spot). Annually thereafter, you must submit a new 1-step PPD or IGRA. If you let more than a year pass between tests, you may need to receive a new 2-step PPD or IGRA. If you test positive for tuberculin exposure, you must submit a negative chest x-ray from within the last year. Once your chest x-ray is a year old, you must submit a TB clearance letter annually
 - **MMR:** Proof of 2 documented MMR (Measles, Mumps and Rubella) vaccinations or immune status documented by titers of all three
 - **Varicella:** Proof of 2 documented Varicella vaccinations or immune status documented by titer
 - **Hepatitis B:** Proof of 3 documented Hepatitis B vaccines and immune status documented by titer. Students who do not take the Hepatitis B vaccine or decline a titer are required to sign a waiver
 - **Tdap/Td:** Proof of documentation within 10 years of the most recent tetanus vaccination (Td). The CDC recommends a single dose of Tdap for healthcare personnel who have never received Tdap regardless of the time since the most recent Td vaccination
 - **Flu Vaccine:** Proof of Seasonal Influenza Vaccination by November 1 unless otherwise required by your clinical agency
 - **Covid Vaccination:** Per current CDC and clinical agency requirements. Vaccination status and/or medical or religious exemption is required as requested by partnering clinical agencies. Clinical placements are not adjusted to accommodate vaccination status. Students who are not vaccinated may be required to wear an N95 mask at all times by the clinical agency
- **Drug Screening**
 - A medical/professional 13 Panel drug screen is required yearly. In some cases, depending on the clinical agency requirements, it may be required more frequently. Any additional drug screen charges are the responsibility of the student
 - A dilute negative or flagged positive drug screen result will not be accepted and requires a repeat drug screen to be completed within 24 hours of notification, at the student’s expense of \$60.00. The repeat drug screen can be ordered by the student directly through Complio. If a testing site is not able to accommodate an appointment within 24 hours, the student may be asked to contact alternative sites to find an appointer sooner. The date and time of scheduled repeat drug screens must be communicated to the Clinical Coordinator
 - **Maintaining Documentation:** Documentation of the requirements above must be kept up to date. It is the responsibility of the student to maintain current records and communicate updates to the Clinical Coordinator. Students who do not maintain current documentation will receive a clinical warning and not be permitted to attend clinical. All required documentation except flu vaccine must be submitted by June 1 each year. It is the student’s responsibility to keep this record updated as needed if there is a change
- **Centralized Clinical Placement (CCP)Modules**
 - All modules on the CCP site must be completed annually after July 1st and prior to clinical orientation. Failure to complete the modules on time will result in a clinical warning and delay in attending clinical, which may place the student at risk for a non-pass and dismissal from the program
- **Background Review**
 - **Purpose:** The Nursing program is committed to providing the public with nurses and nursing students who demonstrate personal and professional behaviors consistent with the standards of the nursing profession. The purpose of nursing licensure is to safeguard life, health, and the public

- welfare of the people of this state. In order to protect the people of the State of New Hampshire from the unauthorized, unqualified, and improper application of services of individuals in the practice of nursing, a criminal background check on all nursing students and any nurse not licensed by the State of New Hampshire is required. The student is responsible for the payment required for the review
- **Scope:** This policy applies to all pre-licensure undergraduate students
 - **Policy:** Satisfactory (no results) results of a background review are required to progress in the nursing Program
 - **Requirement:** Students will be required to undergo background review per clinical agency requirements. This may include a federal background check, State of New Hampshire background check, Bureau of Elder Abuse Services (BEAS) check, and Division for Children Youth and Families (DCYF) as well as fingerprinting
 - **Refusal:** Refusal to provide consent for investigation will result in exclusion from Nursing courses and termination from the Nursing major
 - **Result Review**
 - Background review information released to the Nursing Program will be used only for purposes of assisting in making decisions about continued matriculation in the Nursing major. Certain convictions may disqualify a student from continuation in the nursing major
 - If a background review includes information that the student claims is untrue or inaccurate, the concerns must be addressed by the student to the Bureau of Criminal Identification for resolution
 - Students have an obligation to report any criminal arrest and conviction including violation level offenses to the Director of Nursing within five (5) days of its occurrence. Failure to notify the Director may result in dismissal from the program
 - The Director of Nursing will review the results of all background reviews. If adverse information deemed to be relevant to the applicant's suitability for nursing student status is obtained, the Director of Nursing will notify the student in writing
 - The student will have fourteen (14) days to respond to the information either in writing or, if appropriate, by meeting with the Director of Nursing
 - If a student is disciplined through the PSU Judicial System, the student must notify the Director of Nursing within five (5) days
 - Background reviews are non-transferable from other schools or outside agencies
 - **Convictions**
 - The existence of a conviction does not automatically terminate an individual from the nursing major. Relevant considerations may include but are not limited to the date; nature and number of convictions; the relationship the conviction bears to the duties and responsibilities of nursing; and successful efforts toward rehabilitation. Students who do not disclose criminal convictions on the Plymouth State University Common application and have a positive background review may not progress in the nursing program. Failure to disclose is done at the student's own risk
 - Individuals who have been convicted of a felony or misdemeanor crime or have a pending criminal case must meet eligibility requirements for affiliating clinical facilities. This can be a lengthy process, so students need to begin this process early. Students must also meet the New Hampshire Board of Nursing requirements for licensure eligibility (see NH Board of Nursing web site). Progression and mandatory clinical placements in the nursing program may be contingent on a satisfactory (no result) background review. Clinical agencies may independently perform background reviews on students awaiting placement and do not have to accept a student with an unsatisfactory background review. In addition, clinical agencies may refuse students with certain convictions on their record. The nursing program will not secure alternate clinical placements for students who cannot be placed in an agency related to an unsatisfactory background review

Other Clinical Requirements

- **Clinical Assignments:** Nursing education includes extensive hands-on experience in the clinical area. Students will be assigned to clinical agencies within the state of New Hampshire. Due to increasing competition for clinical placements, students must have a degree of flexibility, as clinical assignments may involve evenings or weekends
- **Orientation:** Students must meet all annual agency orientation requirements to attend clinical. Students will be responsible for submitting all required clinical documentation by the date specified each term by the Clinical Coordinator or their designee, each term. Much of this documentation will be done through the Central Clinical Placement Program (CCP). Students will be instructed in the procedures for completing required documentation each term. Incomplete documentation will mean a clinical warning for the student, and they may not attend clinical until the documentation is complete
- **Transportation to Clinical Experiences:** Students are expected to provide their own transportation for all clinical experiences and to assume all costs incurred
- **Badge Return:** Students shall return ID badges per agency policy. Students who have not returned ID badges per agency requirement will receive an incomplete clinical grade until the badge is returned

Nursing Simulation Lab Guidelines

The Panther Simulation Lab is an essential component of nursing education. The Lab consists of learning spaces that are designed to simulate the real-life clinical setting. The rooms and spaces are designed to dedicated areas of care. Simulation learning is intended to prepare and mirror clinical practice; therefore, students should arrive prepared to care for clients in the same manner they would arrive to the clinical space.

Open Lab is scheduled throughout the semester; please reference the lab calendar on the Panther Simulation Lab's Canvas page. Students are required to sign up for Open Lab at least 24 hours in advance, and there is a cap of 10 students per hour. Open Labs may have a featured learning activity - see lab schedule for updates. The preregistration for Open Lab sessions can be found on the Panther Simulation Lab's Canvas page and registration is required. Students are encouraged to utilize Open Lab times to practice and enhance clinical skills.

Student & Faculty Guidelines for Simulation Lab Etiquette

- Perform hand hygiene prior to entering the simulation lab
- The Professional Appearance Policy (see PSU Nursing Student Handbook) will be expected on lab days. Professional dress differs between a lab day and participation in open lab hours. If appropriate dress code is not followed, students will be sent home. Make-up for missed time will be determined by the course instructor
- Hair must be clean, neat and pulled back off the collar and face
- Cell phones are not to be used during lab time and should be set to 'off' or 'silent' during simulations
- Use professional behavior and language. Patient care scenarios should be taken as realistically as possible
- Follow standard precautions during simulation and adhere to clinical guidelines
- All sharps must be disposed of in the red contaminated sharps containers available in the lab. Notify the Lab Coordinator if containers are full
- Do not use ink or betadine on the manikins, place oral medications in manikins' mouths, or remove an IV catheter from a manikin unless instructed to do so
- Clean up spills on the lab floor when they occur
- Drinks & food are not allowed in the simulation lab, near computers or models/manikins
- Simulation equipment is only to be operated by personnel who have been trained to use such devices
- Respect the confidentiality of your peers. What happens in the lab, stays in the lab
- Students will not share details and activities with other students who have not yet participated in the simulation experience

- Students will leave personal items outside the lab space
- Lounging on equipment or bedding is not permitted
- No student will utilize the simulation space without permission from a faculty member or the Lab Coordinator

Before leaving the lab, please return all chairs, and overbed tables to their proper place, straighten bed linens, return beds to the lowest position and dispose of any waste. Return any supplies and equipment that you have used while in the lab to its designated location. (Ask the Lab Coordinator if you need assistance). Log off the laptops and plug them in.

- Any equipment borrowed from the Simulation Lab must be signed out with a faculty member or the Lab Coordinator
- Report any incidents or malfunctions of simulation lab equipment to the lab coordinator. If they are not immediately available, send a detailed email describing what is wrong with the item and put a note on the item for the next user
- Select clinical supply items are re-used to offset lab costs and environmental impact (ex: saline flushes or IV tubing). Please save items identified for reuse in each lab
- Anyone disregarding the guidelines for simulation lab etiquette will be asked to leave the shared space
- SEE APPENDIX E FOR COVID-19 MODIFICATIONS FOR LAB

Impaired Nursing Practice

1. **Definition:** Impaired Nursing Practice is the inability to implement safe care, including demonstration of actual or potential inability to practice nursing with reasonable skill and safety to clients as a result of illness or a mental health condition or physical condition related to substance use, misuse, or abuse. If the instructor or agency staff suspect impairment, a student will be dismissed from clinical. Medical or Mental Health clearance may be required before returning to clinical.
2. **Substance Use/Misuse:** Substance use or misuse while engaged in any nursing student or clinical experience is strictly prohibited.
3. **Student's Agreement to Submit to Drug Testing by Affiliating Clinical Agencies and to Consent to Release of Test Results to University Officials**
 - a. For all affiliating clinical agencies that require nursing students to be subject to the agency's drug/alcohol testing policies, the student may be tested in accordance with the affiliating agency's policies
 - b. Prior to being assigned to an affiliating clinical agency and as a pre-requisite for placement at any affiliating clinical agency, the nursing student shall a) submit to any drug/alcohol testing required by the affiliating clinical agency; and b) to release a copy of any and all drug/alcohol test results to the Nursing Program Director. Failure to do so shall be grounds for non-placement at an affiliating clinical agency and may result in dismissal from the program
 - c. The cost for the initial testing is covered in the program fees. The cost of any additional drug/alcohol testing required by affiliating clinical agencies shall be borne by the student or affiliating clinical agency, as determined by the affiliating clinical agency. Neither the University nor the Nursing Program, or any of its officers or employees, shall absorb drug/alcohol testing costs arising out of any nursing student's placement at an affiliating clinical agency
 - d. A positive substance abuse test may result in delayed progression or dismissal from the program on the basis that the student is not able to meet the course objectives for classroom and/or clinical experiences. In addition, the student will be reported to the Dean of Students in accord with university policy. The Director of the Nursing Program will notify a student who has a positive drug test
 - e. If a student tests positive for a prescribed drug, however, the person must obtain a written statement from a qualified physician stating that the drug level is within prescribed limits and that the level does not indicate abuse. The physician must indicate that the drug will not interfere with safe practice in the clinical area

- f. A student's failure to submit to a required drug screen, or attempting to tamper with, intentionally dilute, contaminate, or switch a sample will result in the student being dismissed from the program
4. **Random or Incident Related Drug Screening:** To be in compliance with the University's contractual agreement with clinical agencies, students may be screened for substance abuse prior to engaging in any clinical activity (see Drug Screening policy), or at any time deemed necessary by the Director of the Nursing Program. **Duty to Notify of Drug/Alcohol Arrests and Convictions & Disclosure of Drug Use**
- A violation by any nursing student of any state or federal statute, or regulation established pursuant to such statute, pertaining to the manufacture, improper possession, sale, use, or distribution of a drug or alcohol is strictly prohibited. Such violation, if substantiated, will result in the student's dismissal from the Nursing Program. A nursing student who fails to notify the Director of the Nursing program within five (5) days of a legal arrest /conviction for any such violation may be subject to dismissal from the Nursing program
 - Nursing students determined by appropriate Nursing program officials to have violated these prescriptions may be dismissed from the Nursing program
 - Failure to provide the above required information, past legal convictions for activities related to illegal or legally controlled substances, and/or information or evidence that reasonably establishes a past pattern of chemical substance abuse will be grounds for dismissal from the program. However, prior convictions related to chemical substances will be considered along with all other information pertaining to the individual, and will not produce automatic dismissal from the program. Discovery that false or fraudulent or misleading information was provided prior to matriculation will be grounds for dismissal from the program
5. **Student Self-Disclosure of Prohibited Substance Use:** A student who self-identifies use of a prohibited substance or alcohol or drug abuse, and is requesting help to deal with the problem, should contact the Director of the Nursing program. The Director may institute the drug testing procedure. The cost of all drug/alcohol testing required by the Nursing Program shall be borne by the student.
6. **Confidentiality:** All drug testing results will be treated by the Nursing Program as information that is received in confidence and shall not be disclosed to third parties unless: disclosure is required by law; the information is needed by appropriate school officials to perform their job functions; disclosure is needed to override public health and safety concerns; or the student has consented in writing to the release of the information. The Nursing program and the University shall have the right to use and disclose the results of drug testing required by this policy in connection with internal academic purposes, and in connection with the defense of any student grievance and any claims filed by a student, or by his/her personal representative, in any court of law or with any state or federal administrative agency.
7. **Impairment due to Suspected Use/Misuse:** Whenever a nursing student's academic or clinical performance is considered to be impaired, the University reserves the right to require the student to submit to drug testing. This policy describes the procedure to follow if impairment is suspected or evidenced in the clinical or resource laboratory setting or if the student tests positive in a pre-entrance or random drug screen. Impairment of a health care professional is the inability or impending inability to practice according to accepted standards as a result of substance use, abuse, or dependency.
- Suspected Impairment Procedure**
 - Faculty will document student's performance using the Unusual Occurrence Form (see Appendix) and submit it to the Nursing program Director
 - Faculty will inform the Nursing program Director immediately
 - Faculty will inform the student of the reason(s) they are removed from patient care
 - If the student smells of alcohol or drug abuse is suspected, a random drug screening will be performed. Failure to consent to a drug or alcohol test will result in immediate suspension from the Nursing program and can result in dismissal from the program
 - The student must arrange for alternate transportation from the clinical agency
 - The student is responsible for all expenses incurred
 - The student and the Director will meet to review the incident within three (3) business days

- viii. The Director may seek input from campus personnel such as the VPAA, LADAC, and Criminal Justice Department Head or others as needed
 - ix. If test results are positive, the student may be suspended or dismissed from the nursing program
 - x. The student will be referred to the PSU Nursing Student Handbook for judicial policy/grievance procedures
- b. **Procedures for Readmission after Positive Drug Test:** A student who has been dismissed from the Nursing major due to a positive drug test may be considered for readmission if the following conditions are met:*
- i. The student may be required to go to drug treatment: If so, submission of a verifiable letter from a recognized drug treatment agency stating that the student has successfully completed a substance abuse treatment program
 - ii. The student must submit to a drug test prior to readmission. The drug test will be at the student's expense. A positive drug test will result in ineligibility for readmission
 - iii. The student must submit to drug tests as requested by the Director of Nursing or clinical agencies after readmission, as deemed appropriate by either. Drug test(s) will be at the student's expense

*Other conditions for readmission may be required and are dependent on the situation.

- c. **Incidence of Reoccurrence after Readmission:** A student who is readmitted to the Nursing program and thereafter tests positive for any drug/alcohol test or is otherwise determined to have engaged in substance abuse as defined herein will be permanently dismissed from the program and will be ineligible for readmission. Furthermore, the student will be ineligible to receive a letter of good standing from the Nursing program
- d. **Appeal Process:** A nursing student may appeal the decision to dismiss or not readmit a student through the established University Grievance Procedure

Professional Appearance Policy

1. **Personal appearance** is a critical factor in the professional image of a baccalaureate nurse. Unless otherwise stated, students are required to wear the official uniform while in the clinical area, including the nursing lab. Uniforms shall be obtained from an approved Nursing Department source
2. **Requirements for all genders:**
 - A. **Uniform**
 - i. Approved green scrub top and green or black scrub pants. Embroidered PSU logo will be on the front of the top
 - ii. No sweatshirts, sweaters, or vests are permitted
 - iii. Students may wear a plain white or black shirt under their scrub top
 - iv. Clothing must be clean and free of stains, rips, wrinkles, and odors
 - B. **Hair:** Must be clean, neat, and pulled back off the collar and face
 - C. **Facial Hair:** Beards and mustaches must be clean, neat, short and neatly trimmed. Students without full beards must have facial hair neatly shaven when in the clinical area
 - D. **Jewelry:** Small nose jewelry studs no larger than two (2) millimeters in diameter or clear studs are permitted, unless safety protocols for specified units state otherwise. No bracelets. A single, plain wedding ring is allowed. No jewelry or smart watches permitted for inpatient acute mental health clinical.
 - E. **Fingernails:** Should be short, with no artificial nails, no tips, and no polish.
 - F. **Scents:** No colognes, perfumes or cigarette/tobacco odors
 - G. **Shoes and socks:** Plain white or black clean and polished professional, leather or non-permeable shoes (no canvas) with closed toe and heel. Socks must be worn.
3. **Student Identification in Clinical:** PSU name badge and/or Clinical Agency Photo ID (where required) must be worn any time a student is functioning as a student in places other than Plymouth State University

4. **Equipment for Clinical Experiences:** Students are required to have the following items: Stethoscope (with bell and diaphragm), nursing scissors, penlight, black ink pen, and wristwatch with a second hand
5. **Alcohol and Tobacco:** Consumption of alcohol or use of tobacco products while in PSU Nursing uniform is Prohibited

Confidentiality Policy

1. Under Health Information, Portability, and Accountability Act (HIPAA) the law protects client personal information. Students are to always maintain the confidentiality of all clients. For clinical agencies, students will be asked to sign agency specific confidentiality forms. No information with patient identifiers should ever leave the clinical agency in written or verbal form
2. A breach in patient confidentiality may result in failure of the course and dismissal from the program. Under HIPAA laws, civil fines may be applied by the clinical agency
3. In order to document care using computerized systems in health care facilities, student social security numbers may be released to an authorized individual

Position on Unsafe Clinical Practice

1. The PSU Nursing program adheres to the State of New Hampshire Nurse Practice Act (RSA 326-B).
2. Clinical nursing faculty have the responsibility of determining when a student can practice at a safe level and when a student is unable to function at a safe level in the clinical area. If the instructor or clinical agency determines that a student is unsafe to practice, the instructor has the obligation to remove the student from clinical practice
3. Depending on the nature of the safety issue, the student may be asked to leave the clinical site. If dismissal for the remainder of the course is warranted, the student may receive a failing grade for the course if they are unable to meet clinical course objectives
4. Safety violations include, but are not limited to: misconduct, dishonesty, blatant disregard for PSU or agency policies and procedures, failure to maintain oneself in an alert and sober manner and not be impaired by drugs or alcohol, and failure to maintain professional comportment
5. The consequences of unsafe behavior are determined by the nature of the behavior exhibited and the situation in which it occurs.
6. If alcohol or other drugs are suspected by the faculty and/or have the potential or have led to unsafe practice, The Impaired Nursing Practice policy will be followed

Unusual Clinical Occurrences

1. If it is deemed that a student has practiced in the clinical environment in an unsafe manner the faculty:
 - a. Will complete an Unusual Occurrence Report Form (see Appendix C) and submit it to Nursing program Director
 - b. May dismiss the student from clinical
 - c. Will contact the Nursing Program Director within 24 hours of any incident requiring the dismissal of the student from a clinical setting
 - d. Will schedule a conference with the student, the clinical instructor, and the Nursing program Director, within 48 hours of the incident
2. The student will have the opportunity to explain or defend the unsafe behavior, and an appropriate plan will be developed
3. Repeated unsafe behaviors or failure to correct unsafe behavior may result in dismissal from the program
4. The Nursing Program has both the right and responsibility to dismiss from the program any student whose health, conduct or academic standing make it unsafe for that student to remain in a nursing course or the Nursing major
5. Other Unusual Student Occurrences
 - a. In the event that a student becomes ill or injured in the clinical setting, it is expected that the faculty

will submit an Unusual Occurrence Report (see Appendix C) in writing within 24 hours to the Director of Nursing. In addition, faculty will follow the clinical agency policy regarding the occurrence. Included in the report should be the name of the student, agency and unit, date, and time incident occurred, and details of the situation including description of student's symptoms, behavior and/or injury sustained, and treatment received. A statement of follow-up care should be included when appropriate. After review by the Nursing program Director, a copy of the incident should be placed in the student's file

b. Patient Safety Situations

- i. Efforts should be made to trend data on hazards, errors, and near misses by nursing students in the clinical setting
- ii. In the event that a student is involved in a patient care incident where safety was compromised a report should be completed according to the policy of the clinical agency. The student should also complete within 24 hours an Unusual Occurrence Report (see Appendix C) and within 7 days to complete a Root Cause Analysis (see appendix D) of the incident and submit it to their Clinical Instructor
- iii. The Clinical Instructor or will submit reports to Director of Nursing

Risk for Body Fluid Exposure Policy

1. Because of the direct involvement with patients, all nurses and nursing students are at risk for exposure to body fluids, which may be infected with Hepatitis, HIV, or other infectious diseases. In the event that a student is exposed to body fluids in the clinical setting, the following steps should be followed:
 - a. Initiate the agency antiseptic/emergency procedures following exposure.
 - b. Notify the faculty and/or preceptor immediately.
 - c. Initiate the agency protocol for exposure.
 - d. Consider post-exposure prophylaxis as defined by Centers for Disease Control (CDC).
 - e. The faculty must document the clinical incident using the "Unusual Occurrence Report Form" (see Appendix C) and submit to the director of the department of nursing
2. The student is responsible for all costs incurred as a result of the exposure incident

Cellular Phones and Technology Devices

1. Students with cellular phones/ Smart Watches and/or beepers are to turn them off or to silent mode during class and during any clinical practica, whether on campus, in the hospital, or in community-based learning experiences
2. Texting during class or clinical sessions is inappropriate and distracts from the learning experience
3. Cell phones/smart watches may not be allowed in clinical per agency policy. Any use of cell phones/smart watches during clinical must be for professional purposes only
4. Cellphones/smart watches must be on silent or off and must not be on person during all exams
If a student is found to have a cell phone or other smart electronic device on their person, this will be considered a breach of academic integrity

ATI Assessment and Review Policy

What does ATI offer?

Assessment Technologies Institute (ATI) offers an assessment-driven comprehensive review program designed to enhance student NCLEX® success.

The comprehensive ATI review program offers multiple assessment and remediation activities. These include assessment indicators for academic success, critical thinking, and learning styles. Additionally, online tutorials, online practice tests, and proctored tests are provided and span major content areas in nursing. In combination with the nursing program content, these ATI tools assist students in preparing effectively, helping increase their confidence and familiarity with nursing content. Students can access ATI information and orientation resources from the ATI student homepage.

Students enrolled in NR 2100 will be guided through the ATI orientation. **It is highly recommended that students spend time navigating through these orientation materials.** *Students can find ATI Tutorial, Practice Assessment, and Proctored Assessment schedules and dates in course syllabi.*

Modular Study

ATI provides Review Modules in print and eBook formats that include written and video materials in key content areas. Students are encouraged to use these modules to supplement coursework. Instructors may assign these ATI resources during a given course as part of active learning and/or remediation following assessments.

Tutorials

ATI offers unique Tutorials designed to teach nursing students how to think like a nurse, take a nursing assessment, and make sound clinical decisions.

With Learning System 3.0, students can assess their knowledge through pre-set quizzes, build a customized quiz that focuses on specific categories, or test category-specific comprehension in an adaptive quizzing environment.

Nurse Logic

This is an excellent way to learn the basics of how nurses think and make decisions.

Learning System

Offers practice tests in specific nursing content areas that allow students to apply the valuable learning tools from Nurse Logic. Features such as a Hint Button, a Talking Glossary, and a Critical Thinking Guide are embedded throughout the Learning System tests to help students understand the content.

Assessments

There are practice assessments available for students and standardized proctored assessments that may be scheduled during courses. These assessments will help students identify what they know, and more importantly, identify content areas requiring remediation (called Topics to Review).

Focused Review/Active Learning Templates/Remediation Flashcards

Active Learning/Remediation is a process of reviewing content in an area that was not learned or not fully understood (as determined on an ATI assessment).

Remediation tools are intended to help the student review vital information to be successful in courses and on the NCLEX®. The student's individual performance profile will contain a listing of the topics to review. The student can remediate using the Focused Review, which includes links to ATI books, media clips, and active learning templates. When the student has completed their first round of remediation following practice assessments, they can take a post-remediation quiz which provides similar questions on identified content gaps. Upon completion of the quiz, the student can review their knowledge gaps and study updated E-book content. The post-remediation quiz is intended to provide feedback on the impact of remediation.

The instructor has online access to detailed information about when ATI resources are accessed and the amount of time spent in assessments, focused reviews, and tutorials by each student. Students may be required (per syllabus) to provide documentation that required ATI work was completed using the "My Transcript" feature under "My Results" of the ATI Student Home Page and/or submitting written Remediation Templates as required.

To earn points identified in the ATI Student Assessment and Review policy for each practice assessment, students will complete the remediation provided following the first attempt of practice assessments A and B. Once completed, students will take the post-remediation quiz (if available) and complete the follow-up remediation before the scheduled proctored assessment.

Faculty Responsibility

- a. Assist students to set up an account with ATI in NR 2100
- b. Coordinate distribution of the ATI Bundle to students in NR 2100
- c. Coordinate scheduling of computer-administered Proctored Assessments
- d. Convey via course syllabi due dates and required ATI assignments, including Practice Assessments, Proctored Assessment, and plan for remediation using the ATI Focused Review tools, Remediation Flashcards, and Active Learning Templates

Student Responsibility

- a. Students will complete all required ATI assignments, including but not limited to ATI Practice Tutorials and Practice Assessments, Proctored Assessments, and remediation using ATI's Focused Review tab (see Table 1 below). The requirement of remediation deliverables may vary by course. The student must refer to the course syllabus for due dates and details
- b. Completion of the designated Practice Tutorials, Practice Assessment(s), Proctored Assessment(s), and remediation using Focused Review (if required) is a course requirement. If any required component is missed, students will receive a zero for that portion of the ATI Grade per the ATI rubric. For example, if any required element of practice assessment A or B or practice remediation requirement is not completed by the due date, the student will not earn 4 points in the Practice Assessment category

Proficiency Levels: Below is a description of what each Proficiency Level means

- **Proficiency Level 3** - indicates a student is likely to exceed NCLEX-RN in this content area. Students are encouraged to engage in continuous focused review to maintain and improve their knowledge of this content
- **Proficiency Level 2** - indicates a student is fairly certain to meet NCLEX-RN standards in this content area. Students are required to engage in continuous focused review in order to improve their knowledge of this content
- **Proficiency Level 1**- indicates a student is likely to just meet NCLEX-RN standards in this content area. Students are required to develop and complete a rigorous plan of focused review in order to achieve a firmer grasp of this content.
- **Below Proficiency Level 1**- indicates a need for a thorough review of this content area. Students are strongly encouraged to develop and complete an intensive plan for focused review. Students at this level are expected to fully remediate according to the instructor's directions

Remediation

Remediation is a process of reviewing content not answered correctly on an ATI Tutorial, Practice Assessment, or Proctored Assessment. This helps the students increase proficiency in identified areas of knowledge deficit. Remediation and Focused Review are course requirements. Students must refer to the course syllabus for requirements. Students may be required to submit proof of completion of all ATI assigned components, including remediation, to earn points.

Grading and Remediation for the RN Comprehensive Predictor Assessment (see Table 2)

For specific grading and remediation policies for the RN Comprehensive Predictor Assessment, please see the NR 4073 course syllabus.

Table 1 ATI Content Mastery Series Grading Rubric

ATI CONTENT MASTERY SERIES GRADING RUBRIC			
Specific due dates and requirements per course syllabi			
Practice Assessment			
4 Points			
Complete Practice Assessment A		Complete Practice Assessment B	
Remediation: Minimum 1-hour Focused Review		Remediation: Minimum 1-hour Focused Review	
For each topic missed, complete an active learning template <i>or</i> remediation flashcard (per syllabus) as part of the required remediation process.*		For each topic missed, complete an active learning template <i>or</i> remediation flashcard (per syllabus) as part of the required remediation process.*	
Take Post Study Quiz (if available)** and complete an active learning template or remediation flashcard (per syllabus) for each topic missed		Take Post Study Quiz (if available)** and complete an active learning template or remediation flashcard (per syllabus) for each topic missed.	
<i>All elements required per the course syllabus (Practice A, Remediation, Practice B, Remediation, Focused Review, and Quizzes) must be completed by the due date to receive 4 points. Please refer to the course syllabus for course-specific requirements.</i>			
Standardized Proctored Assessment			
Level 3 = 4 points	Level 2 = 3 points	Level 1 = 1 point	Below Level 1 = 0 points
Remediation = 2 points	Remediation = 2 points	Remediation = 2 points	Remediation = 2 points
Minimum 1 hour Focused Review	Minimum 2 hours Focused Review	Minimum 3 hours Focused Review	Minimum 4 hours Focused Review
For each topic missed, complete an active learning template or remediation flashcard (per syllabus) as part of the required remediation process.*	For each topic missed, complete an active learning template or remediation flashcard (per syllabus) as part of the required remediation process.*	For each topic missed, complete an active learning template or remediation flashcard (per syllabus) as part of the required remediation process.*	For each topic missed, complete an active learning template or remediation flashcard (per syllabus) as part of the required remediation process.*
10/10 points = 100%	9/10 points = 90%	7/10 points = 70%	6/10 points = 60%
Proctored Assessment Retake ***			
No retake required	No retake required	Retake required	Retake required
<p>* Handwritten Active Learning Templates (ALTs)</p> <p>** Post-study quiz questions may be provided to a student based on specific student knowledge gaps. (Major Content Areas 75% or less. 0 to 50 items possible for additional remediation)</p> <p>*** If a student meets the program benchmark on the retake, that student can earn the higher of the two scores (for example, a Level 1 student who earns Level 2 on the retake will earn the higher of the two scores, i.e., 90% vs. 70%)</p> <p>Please note that the 1st attempt of any practice assessment will have rationales turned off by the instructor.</p>			

Table 2 ATI Comprehensive Predictor Assessment Grading Rubric

ATI COMPREHENSIVE PREDICTOR ASSESSMENT GRADING RUBRIC			
Specific due dates and requirements per course syllabi			
Practice Assessment			
4 Points			
Complete Practice Assessment A		Complete Practice Assessment B	
Remediation: Minimum 1 hour focused review		Remediation: Minimum 1 hour focused review	
For each topic missed, complete an active learning template or remediation flashcard (per syllabus) as part of the required remediation process*		For each topic missed, complete an active learning template or remediation flashcard (per syllabus) as part of the required remediation process*	
Take Post Study Quiz (if available)** and complete an active learning template or remediation flashcard (per syllabus) for each topic missed		Take Post Study Quiz (if available)** and complete an active learning template or remediation flashcard (per syllabus) for each topic missed	
<i>All elements required per the course syllabus (Practice A, Remediation, Practice B, Remediation, Focused Review, and Quizzes must be completed by the due date to receive 4 points. Please refer to the course syllabus for course-specific requirements</i>			
Standardized Proctored Assessment			
95% or above Passing Predictability = 4 points	90% or above Passing Predictability = 3 points	85% or above Passing Predictability = 1 point	84% or below Passing Predictability = 0 points
Remediation = 2 points	Remediation = 2 points	Remediation = 2 points	Remediation = 2 points
Minimum 1 hour Focused Review	Minimum 2 hour Focused Review	Minimum 3 hour Focused Review	Minimum 4 hour Focused Review
For each topic missed, complete an active learning template or remediation flashcard (per syllabus) as part of the required remediation process*	For each topic missed, complete an active learning template or remediation flashcard (per syllabus) as part of the required remediation process*	For each topic missed, complete an active learning template or remediation flashcard (per syllabus) as part of the required remediation process*	For each topic missed, complete an active learning template or remediation flashcard (per syllabus) as part of the required remediation process*
10/10 points = 100%	9/10 points = 90%	7/10 points = 70%	6/10 points = 60%
Proctored Assessment Retake***			
Per syllabus	Per syllabus	Per syllabus	Per syllabus
<p>* Handwritten Active Learning Templates (ALTs)</p> <p>** Post-study quiz questions may be provided to a student based on specific student knowledge gaps. (Major Content Areas 75% or less. 0 to 50 items possible for additional remediation)</p> <p>*** If the program requires a retake of a Proctored Assessment and a student meets the program benchmark on the retake, that student can earn an additional percentage point (for example, a Level 1 student can now earn 8 points).</p>			
Please note that the 1st attempt of any practice assessment will have rationales turned off by the instructor.			

Medication Administration Competency

Math skills for dosage calculations are a major component in safe preparation and administration of medication as well as in educating patients and families. This medication administration competency program will facilitate students in meeting these high standards through a semester-to-semester approach of increasing expectations. The following elements are required:

- a. In NR 2100 students will be introduced to Dosage Calculation 2.0 Series (see ATI Policy). One assessment will be given to assess basic clinical calculations at 10% of overall grade
- b. In NR 3020 students will have three attempts to pass a math calculation assessment prior to administering medication in clinical. Students must achieve a score of at least 90% on the assessment to pass, and the score will be entered into the gradebook toward the course total. If a 2nd or 3rd attempt is needed to pass the assessment with at least a 90%, the scores will be averaged and that value will be entered into the gradebook. Safe medication administration is an expectation for demonstrating clinical competency in NR 3052. Failure to pass the required math calculation assessment after three attempts may prohibit the student from administering medication in the clinical setting, and the student is therefore at risk of not passing the NR 3052 clinical course.
- c. In NR 3020, NR 3095, NR 3035, NR 3070, NR 4020, NR 4000, NR 4015, and NR 4500: 10% of exam questions will relate to clinical calculations
- d. Students will be assessed via competency checklist on rights of medication administration during scheduled lab time
- e. Students will consistently demonstrate safe medication administration in all clinical settings. Unsafe medication administration will result in a clinical warning and the potential for clinical non-pass and dismissal

Clinical Remediation Program

The purpose of this policy is to define the Clinical Remediation Program process including responsibilities of all those involved. The Nursing Department Remediation Program was created to support students in meeting clinical requirements and demonstrating competencies.

1. Remediation Process

- a. Referral to the Course Coordinator for remediation will occur when:
 - i. A student's performance indicates that they are not meeting one or more of the clinical competencies at a developing level or higher
 - ii. Risk for a grade of non-pass
 - iii. One Clinical Warning
- b. Faculty Responsibility: Complete the Clinical Remediation Referral form and forward it to the Course Coordinator and student prior to remediation.
- c. Student Responsibility:
 - i. Contact the Course Coordinator within 48 hours of receiving notice of referral to set up a specific time to discuss remediation
 - ii. Attend the remediation session prepared by having reviewed the appropriate literature in the skills book (including reviewing appropriate skills checklists), medical/surgical text, or medication reference text
 - iii. Bring a copy of the Clinical Remediation Referral form to the remediation session
 - iv. Following the remediation session, complete the self-evaluation portion (part 2) of the Clinical Remediation Referral form and return to your clinical instructor
- d. Course Coordinator Responsibility:
 - i. Collaborate with the referring clinical faculty to create the remediation plan and designate a time with referred student
 - ii. Following the remediation, complete instructor feedback portion of the Clinical Remediation Referral form
 - iii. Forward a copy of the completed form, following remediation, to the referring clinical instructor and the remediated student

- iv. If the clinical instructor is also the course coordinator they may request another faculty member or the director to assist with the remediation
- v. Assure a copy of the referral is placed in student's EAB file

Student Administration of Intravenous Medications in Clinical

1. All peripheral intravenous (IV) medications and central line medications and flushes must be administered under the direct supervision of clinical instructor/preceptor throughout the program
2. Intravenous Secondary Infusions (IVPB) and change of flow rates to continuous IV medications can only be done under the direct supervision of a clinical instructor or preceptor
3. Intravenous push (IVP) medications can only be administered at the instructor/preceptor discretion in NR 3135, NR 3550, NR 4100, NR 4150, and NR 4082 clinical under the direct supervision of the clinical instructor or preceptor
4. In all clinical courses a Saline Flush is considered a medication and must be done with direct supervision
5. Below is a list of the medications that students are never permitted to administer via Intravenous push. This list is not exhaustive and additional drugs may be added subject to current evidence and agency policy
Failure to comply with this policy will result in a non-pass for the clinical course and dismissal from the Nursing program
Clinical instructors may add additional medications specific to their clinical specialty/patient Population

Students are NEVER permitted to administer the following medications as intravenous push (IVP):

- Adenosine
- Diltiazem
- Amiodarone
- Digoxin
- Atropine
- Lidocaine
- Pronestyl
- Epinephrine
- Isuprel
- Insulin
- Mexitil
- Bretylium
- Brevibloc
- Propofol
- Verapamil
- Tissue Plasminogen Activator (TPA)
- Heparin
- Metoprolol
- Nitrates
- Chemotherapy

Students are not allowed to hang blood products. They are encouraged to observe and assist with IV line priming of blood tubing and following administration standards for patient care.

SECTION IV

LICENSURE

Licensure

Upon successful completion of the Nursing Program, graduates will be eligible to apply to take the National Council Licensure Examination (NCLEX-RN) for licensure as a Registered Nurse (RN).

Each licensure applicant shall furnish to a State Board of Nursing satisfactory evidence of the following:

- Completion of a course of study in an approved nursing education program.
- Satisfaction of other qualification requirements as the BON may prescribe.

Costs for examination and licensure are the responsibility of the student

The **student** is responsible for obtaining the necessary forms and requirements from that state in which he/she plans to apply for initial licensure. Information for licensure throughout the United States can be obtained at <https://www.ncsbn.org/index.htm>

SECTION V
APPENDICES

Appendix A
ANA Code of Ethics for Nurses

1. The nurse, practices with compassion and respect for the inherent dignity, worth, and unique attributes of every person.
2. The nurse's primary commitment is to the patient, whether an individual, family, group, community, or population.
3. The nurse promotes, advocates for, and strives to protect the rights, health, and safety of the patient.
4. The nurse has authority, accountability, and responsibility for nursing practice; makes decisions; and takes action consistent with the obligation to promote health and to provide optimal care.
5. The nurse owes the same duties to self as to others, including the responsibility to promote health and safety, preserve wholeness of character and integrity, maintain competence, and continue personal and professional growth.
6. The nurse, through individual and collective effort, establishes, maintains, and improves the ethical environment of the work setting and conditions of employment that are conducive to safe, quality healthcare.
7. The nurse, in all roles and settings, advances the profession through research and scholarly inquiry, professional standards development, and the generation of both nursing and health policy.
8. The nurse collaborates with other health professionals and the public, to protect human rights, promote health diplomacy, and reduce health disparities
9. The profession of nursing, collectively through its professional organizations, must articulate nursing values, maintain the integrity of the profession, and integrate principles of social justice into nursing and health policy.

Copyright: American Nurses Association, Code of Ethics for Nurses with Interpretive Statements, Silver Spring, MD: American Nurses Publishing, 2015 retrieved at http://www.nursingworld.org/DocumentVault/Ethics_1/Code-of-Ethics*for-Nurses.html

Appendix B
EXAM ITEM APPEAL FORM

NOTE: This form must be submitted within 24 hours of grades being posted on Canvas. Submissions after that time will not be considered. Faculty will have 3 days after receipt of appeal form to make a final decision.

Date	Student Name
Course Number and Title	
Quiz/Test Item Number	
Quiz/Test Item Text	
Keyed Answer	
Student Answer	
Rationale for your answer: (must include where your answer is found in the text, PowerPoint or other course materials assigned for the current course)	

Unusual Occurrence Report Form

THIS FORM AS AN ADJUNCT TO THE UNUSUAL OCCURRENCES POLICY; PLEASE SEE ENTIRE POLICY FOR SPECIFIC INSTRUCTIONS REGARDING UNUSUAL OCCURRENCES.

Date of Unusual Occurrence	Time of Unusual Occurrence
Place of Unusual Occurrence: Agency/Unit	Name and Contact Information of Person Completing Form
Student's Name and Contact Information	
State the facts of Who, What, Where, Why, When, and How of the unusual occurrence/incident that happened including descriptions of student's symptoms, behavior and/or injury, and any treatment received.	
Describe follow up care if necessary	

**Return this form to: Director
 PSU Nursing Program
 17 High Street MSC 58
 Plymouth, NH 03264**

For PSU Nursing Program Office Use Only	
Date PSU Nursing Program received report	Date report filed
Action taken	

Appendix D Root Cause Analysis

Name of Person Completing This Form:

Date:

Description of event

What happened?

Where did process go wrong? What steps were involved in (contributed to) the event? What are the usual steps in the process(es)?

Why do you think it happened?

Human Factors

1. What role did human performance play in this event?
2. What human factors were relevant to this case? I.e. fatigue, staff illness, noise, temperature, scheduling, personal problems, stress, rushing, cognitive errors?
3. Were distractions or interruptions a factor in this case?

Communication among staff / Information availability

1. Was communication adequate and timely in this event?
2. Are there obstacles to communication relating to this event?
3. Was the needed information available, accurate, and complete?
4. Was patient identification an issue in this case?
5. Does the medical record documentation adequately provide a clear picture of what happened?
6. Were there issues related to continuity of care?

Aspects of care and care planning

1. What issues related to physical or behavioral assessment were a factor in this event?
2. What policies or procedure relate to the level and frequency of observation and monitoring?
3. Did the level and frequency of patient observation or monitoring meet standard of care?
4. What issues relating to philosophy of care or care planning had an impact on this case?

Staffing

1. How did staffing levels compare with ideal levels? (Give #s)
2. Was workload a factor in this event?
3. How are staffing contingencies handled?

Training/Competency

1. Were issues relating to staff training or staff competency a factor in this event?
2. Is training provided prior to the start of the work processes?
3. Was an individual performing in a situation for which they were inappropriately trained or prepared?
4. How is staff performance assessed? Are competencies documented?
5. Are the results of training monitored over time?
6. Is there a program to identify what training is needed?

Supervision of Staff and Credentialing (Includes physicians in training)

1. Was supervision of staff an issue in this case?
2. Was the staff physician involved in the case in a timely way?
3. Are there issues related to credentialing?

Adequacy of Technological Support

1. Was technological support adequate?

Equipment/ Equipment Maintenance/Management

1. What equipment products were involved in this case/event?
2. Did equipment/products function properly?
3. Did alarms or monitoring systems function properly?
4. Was equipment used as designed?
5. Has staff been adequately trained in the use of the equipment / products?
6. Was equipment maintenance an issue?
7. Is there a maintenance program?

Environmental Aspects

1. Was the work area or environment designed to support the function for which it was being used? (i.e space, privacy, safety, access)
2. Does the work environment provide physical stressors for staff? (i.e. temperature, noise, improper lighting)
3. Does the work environment meet current codes, specifications, and regulations?
4. What systems are in place to identify environmental risks?
5. What security systems and processes relate to this event? Were there issues related to security systems and processes?
6. What emergency and failure modes responses have been tested? (safety evaluations, disaster drills, etc)

Control of Medications: Storage/Access

1. Was storage or access to medications an issue?

Labeling of Medication

1. Was labeling medications(manufacturer or HCMC labeling) an issue?

Leadership

1. To what degree is the culture conducive to risk identification and reduction?
2. What are the barriers to communication of potential risk factors?
3. How is the prevention of adverse outcomes communicated as a high priority?

Other questions

1. Are there any other factors that influenced this outcome?
2. Were there uncontrollable external factors?
3. What can be done to protect against the uncontrollable factors?
4. What other areas or services are impacted (might have a similar event)

Communication with Patient/Family

1. Was communication with the patient and/or family adequate?
2. Was there disclosure regarding the untoward outcome, details of the event?

Summary of Root Causes and contributing factors



PSU Nursing COVID Policy

The PSU Nursing program adheres to PSU COVID guidelines as well as the requirements set by our partnering clinical agencies. These are subject to change and may differ among clinical agencies. If you are experiencing COVID symptoms (fever, chills, cough, shortness of breath, fatigue, headache, new loss of smell/taste, sore throat, congestion, runny nose, nausea, vomiting, diarrhea), you should be tested for COVID and wear a mask until you receive your result. If you are symptomatic and/or test positive for COVID, please notify your clinical instructor and the clinical coordinator as soon as possible to receive instructions specific to your assigned clinical agency. Clinical agencies may require an isolation period or the use of a procedure or N95 mask during your clinical shift. All students will be fit tested and provided with N95 masks for clinical use at the beginning of the academic year.

Plymouth State University's Respirator Policy, Nursing Program

Purpose

To establish a Respirator Use Policy regarding the proper fit, use and care of respirators by Nursing students and instructors during clinical learning experiences.

Objective

The primary objective is to protect Nursing students and instructors from airborne infectious disease contaminants to safely engage in clinical learning experiences.

Program Responsibility

1. Respirators shall be provided by The Plymouth State University Nursing Program when such equipment is necessary to protect the student and instructor.
2. The Plymouth State University Nursing Program shall provide the respirators that are applicable and suitable for infectious disease prevention.
3. **Protection against aerosols include**
 - M. tuberculosis
 - Novel Flu
 - SARS-CoV-2
 - Ribavirin, Pentamidine

PPE is required when

- Entering patient rooms with suspected or confirmed airborne infection
 - Aerosol generating procedures
 - As directed by your site contact when on rotation
4. The Plymouth State University Nursing Program in collaboration with the Office of Environmental Health & Safety, shall be responsible for the establishment and maintenance of a respiratory protection program that shall meet the requirements of OSHA- 29 CFR 1910.134 Respiratory Protection.
 5. A respirator wearer shall be permitted to leave the hazardous area for any respiratory-related cause. Reasons may include but are not limited to the following:
 - failure of the respirator to provide adequate protection
 - malfunction of the respirator
 - detection of leakage of air contaminant into the respirator
 - increase in resistance of respirator during breathing
 - severe discomfort in wearing the respirator
 - illness of the respirator wearer, including: sensation of dizziness, nausea, weakness, breathing difficulty, coughing, sneezing, vomiting, fever, and chills.
 - to wash the face and the respirator face piece to minimize skin irritation
 - to take periodic breaks in an uncontaminated area

Malfunctions of respiratory protective equipment shall be investigated by the employer to determine the cause and to assure corrective measures are taken. Suspected manufacturing defects should be reported to the manufacturer and certifying agency.

Respirator Wearer Responsibility

1. The wearer shall use the provided respiratory protection in accordance with PSU's instructions, the manufacturer's instructions, as well as the training received.
2. The wearer shall guard against all damage to the respirator.

3. If a respirator malfunction occurs, the wearer shall immediately leave the contaminated area and report the malfunction to their clinical instructor and the Plymouth State University Nursing Program. The Nursing Program will then report this to the Office of Environmental Health and Safety.
4. The wearer shall report any change in their medical status that may impact their ability to wear a respirator safely.
5. The wearer shall report any changes at their clinical site that may affect this policy to the Nursing Clinical Coordinator or designee.

Program Coordination

1. The coordinators of the Respirator Program shall be the Nursing Clinical Coordinator, or designee and the PSU Director of Environmental Health & Safety, or designee. It is the responsibility of the coordinators to assure that the elements outlined in this program are adhered to by all affected students and instructors of The Plymouth State University Nursing program.

Responsibilities include:

- Working with clinical partners to identify areas or tasks requiring respiratory protection
- Evaluation of areas where respiratory protection is required
- Selection of appropriate level of respiratory protection
- Provide employee and student training in the use, selection, storage and maintenance of respiratory protection equipment.
- Evaluate employees and students for suitability for respirator use and provide adequate fit testing procedures
- Coordinate the respirator inspection process if applicable
- Perform annual evaluation of the respirator program
- Maintain documentation on equipment certification and inspection if applicable, as well as training for employees and students

Medical Monitoring

An OSHA Respiratory Medical Clearance Form must be completed by each student and instructor and reviewed by a Medical Authority (MD, DO, APRN, PA, RN) before fit tested for a respirator. The Medical Authority reviewing the clearance form will not be the same party completing the fit testing.

Student/Instructor Training Program

1. Respirator users shall be instructed and trained in the proper use of respirators and their limitations.
2. The respirator seal must be checked prior to entering the contaminated work area. Failure to do so may result in leakage which voids or limits protection. The work area is to be left immediately if breathing becomes difficult, dizziness or other distress occurs, or if any odor, taste, or irritation is noticeable. Never alter or modify respirators.
3. Respirators, even when worn conscientiously, do not provide the wearer with 100% protection. The protection is, however, increased when the wearer has an understanding of the warnings and limitations of these devices.

Respirator Selection Process

The selection of the proper type(s) of respirator(s) shall be based upon:

- Infectious disease prevention
- Respirator guidelines set by partnering clinical agencies
- PSU's Office of Environmental Health and Safety and the PSU Nursing program
- Currently only N95 respirators are approved for this program. N95 respirators are as follows:
 - 3M 1870+ N95 – *Primary Option*
 - 3M 8210 N95 – *Secondary Option*
 - Patriot 9280 N95 – *Small Option*

N95 Respirators are recommended for single use only and should be disposed of in a regular trash receptacle. The only time this recommendation changes is if there is a severe PPE shortage (for example COVID-19 pandemic).

Training

Each respirator wearer shall be given documented training and retraining, which shall include explanations and discussions of:

- the respiratory hazard and the effect on the wearer if the respirator is not used properly
- the engineering and administrative controls being used and the need for respirators to provide protection
- the reason for selecting a particular type of respirator
- the function, capabilities, and limitations of the selected respirator
- the method of donning the respirator and checking its fit and operation
- the proper wearing of the respirator
- respirator maintenance, inspection, and storage
- recognizing and handling emergency situations
- applicable governmental regulations for specific substances

Below are some resources regarding respiratory protection & fit testing:

- <https://www.osha.gov/laws-regs/regulations/standardnumber/1910/1910.134>
- https://www.youtube.com/watch?v=Syj_zeNtLGI
- <https://www.youtube.com/watch?v=PVyl2bh4XIs>
- <chrome-extension://efaidnbmnnnibpcajpcglclefindmkaj/https://multimedia.3m.com/mws/media/887642O/wear-it-right-auratm-respirator-1870-poster-english.pdf>

Respirator Fit

Each person shall be fit tested before being assigned a respirator. Each person using a respirator shall conduct a user seal check of the respirator by appropriate means each time the respirator is donned or adjusted. All respirator fit testing must be documented.

Maintenance, Inspection, And Storage

Maintenance shall be carried out in accordance with the manufacturer's instruction and on a schedule that ensures that each respirator wearer is provided with a respirator that is clean, sanitary, and in good operating condition. Each respirator shall be inspected by the wearer prior to its use to ensure that it is in proper working condition. Respirators shall be stored in a convenient, clean, and sanitary location.

Program Documentation

All documents produced to meet the documentation requirements of this program (wearer training, fit testing, equipment inspection etc.) shall be kept with the Nursing Clinical Coordinator, or designee.

Special Considerations

Every respirator wearer shall receive instructions on fit including demonstrations and practice in how the respirator should be worn, how to adjust it, and how to determine if it fits properly. Respirators shall not be worn when conditions prevent a bad face seal. Such conditions may be a growth of beard, sideburns, a skull cap that projects under the face piece, or temple pieces on glasses. Also, the absence of one or both dentures can seriously affect the fit of a face piece. Also, contact lenses should not be worn with a respirator.

Factors preventing a good seal include but are not limited to:

- Facial Hair
- Skull cap
- Facial bone structure
- Dentures
- Facial scars
- Eyeglasses
- Plymouth State Nursing Students and Instructors will be required to be clean shaven to ensure proper respirator fit for the duration of the clinical learning experience.

Fit Testing

- **Negative And Positive User Seal Check:** These instructions are for N95 use only. If another type of respirator is being used, please contact The Nursing Department Coordinator or designee prior to use. Please follow the manufacturer's instructions when completing a user seal check.
 1. Both positive pressure and negative pressure fit checks must be performed by the wearer after donning a respirator
 2. Before beginning a user seal check, place the respirator on your face so that the nose piece covers the bridge of your nose, while the bottom of the respirator cups your chin. Your mouth and nose should be covered by the respirator.
 3. Place and pull the top strap over your head and position it high on the back of the head.
 4. Then pull the bottom strap over your head and position it below your ears or around your neck.
 5. Adjust the fit to ensure it is comfortable and positioned properly.
 6. Mold the nose area to the shape of your nose by pushing inward while moving your fingertips down both sides of the nose piece.
 7. Always use two hands when molding the nose piece.
 8. Pinching the nosepiece with one hand may result in improper fit and less effective performance.

Positive Pressure User Seal Check

Place palm of hand over the middle panel of the respirator. Gently exhale to create slight pressure inside the face piece. Check the respirator seal by listening and feeling for leakage of air from the face piece. If you feel air on your face, eyes or if you feel air escaping then you do not have a tight fit. If leakage is detected, reposition the respirator on the face and/or readjust the tension of the headbands. Ensure the respirator fits snugly around the face. **Repeat until a satisfactory seal is obtained.** If you are unable to create a seal, please contact your clinical instructor or the unit manager immediately.

Negative Pressure User Seal Check

Place palms of hands over the middle panel and inhale gently to create negative pressure inside face piece. If your respirator has a cartridge (inhalation ports) cover those with your hands. Hold breath for five to ten seconds. As the face piece collapses slightly, check the respirator seal by listening and feeling for leakage of air from the face piece. If you feel air on your face, eyes or if you feel air escaping than you do not have a tight fit. If leakage is detected, reposition the respirator on the face and/or readjust the tension of the headbands. Ensure the respirator fits snugly around the face. **Repeat until a satisfactory seal is obtained.**

Qualitative fit testing must be performed initially for all respirator wearers, and again on an annual basis or if the person's facial contour changes. Qualitative fit testing is performed to test the seal of the face piece. This will be completed by the Program Coordinator or designee.

Particulates

The 3M FT-10 (sweet) and 3M FT-30 (bitter) Qualitative Fit Testing Kit shall be used and the included Manufacturer Instructions shall be followed.

Respirator Storage

Respirators must be stored where they are protected from conditions that could alter the shape of the mask. Avoid storing respirators in areas of high heat, direct sunlight, extreme cold, very dusty environments, excessive moisture, or where objects may fall or be placed on top of the respirator.

References and Related Documentation

<https://www.osha.gov/laws-regs/regulations/standardnumber/1910/1910.134>

https://www.youtube.com/watch?v=Syj_zeNtLGI

<https://www.youtube.com/watch?v=PVyl2bh4XIs>

Respirator Medical Clearance Form

Revision History

Revision History		
Revision	Date	Description of Change
A	7/20/22	Initial issue. Created policy for PSU's Nursing Program, specifically for N95 usage during off site clinicals.

PSU Nursing Travel Policy

The Plymouth State University Nursing Program recognizes the educational value of student travel. The Nursing Program seeks to promote safe travel practices in accordance with the university travel policies and procedures.

Proposed Nursing student trips for educational enrichment will be approved by the Nursing Director in addition to the university.

Eligible Nursing students traveling on institutionally approved trips will be the equivalent of Junior/Senior class standing with current academic course grades of at least an 80%/Pass for clinical courses to attend the trip.

If a student plans to attend a trip and is then unable to attend as they no longer meet the trip criteria, any student travel arrangement payment will be forfeited. If travel arrangements have been paid for and the student decides to not attend, they will need to pay for the travel arrangements.

Participating students are required to comply with all university and Nursing program policies and procedures including the code of conduct/professionalism rubric. Travel participants must share the trip information with faculty and complete essential course work.

All necessary travel-related paperwork must be completed in a timely manner.

Student nurse travel will be conducted in accordance with Plymouth State University and University System of New Hampshire policies, procedures, expectations, and required forms.

PSU Nursing Professionalism Rubric

	Meets Professional Expectations	Developing Professional Expectations	Does Not Meet Professional Expectations
Preparedness	<ul style="list-style-type: none"> Consistently participates in discussions and answers questions Demonstrates critical thinking by asking questions to synthesize understanding 	<ul style="list-style-type: none"> Usually participates in discussions and can answer some questions Asks questions to increase understanding 	<ul style="list-style-type: none"> Does not participate in discussions Cannot answer content questions Does not ask questions
Time Management	<ul style="list-style-type: none"> Attends all classes and clinicals on time Completes and submits work on time 	<ul style="list-style-type: none"> Gives advance notice for one late or missed class or clinical Notifies instructor of one late assignment 	<ul style="list-style-type: none"> Late or absent to class or clinical more than one Missed assignments without notification
Quality of work	<ul style="list-style-type: none"> Work exceeds minimum requirements Strives for best effort on work Takes initiative to improve work based on feedback 	<ul style="list-style-type: none"> Required elements of work are adequate Feedback is given multiple times before work is improved 	<ul style="list-style-type: none"> Work remains incomplete after feedback Work reflects minimal effort Resists feedback, blames circumstances, or does not respond
Teamwork	<ul style="list-style-type: none"> Stays on task to complete activity Involves team members equally in activities Makes clear and significant contributions to team projects 	<ul style="list-style-type: none"> Supports team leader in activities Completes assigned portion independent of other team members 	<ul style="list-style-type: none"> Does not engage in group activities Does not participate or contribute equally during team projects
Respectfulness	<ul style="list-style-type: none"> Respects faculty, peers, and learning environment through behaviors Follows program policies for technology Regulates own responses to positively impact teamwork and communication Verbal and/or written communication is professional 	<ul style="list-style-type: none"> Respects faculty, peers, and learning environment but may disrupt own learning through distractions Follows program policies for technology Regulates own responses to positively impact teamwork and communication Verbal and/or written communication is casual 	<ul style="list-style-type: none"> Disrespects faculty, peers, and learning environment through distracting behavior Disrupts own learning through inattention Does not follow program policies for technology Unable to regulate own responses or they negatively impact teamwork and communication Verbal and/or written communication is rude
Ethical behavior	<ul style="list-style-type: none"> Is always honest in word and action Adheres to program policies on ethical conduct and integrity 	<ul style="list-style-type: none"> Is always honest in word and action Adheres to program policies on ethical conduct and integrity 	<ul style="list-style-type: none"> Is dishonest in word or action Knowingly violates program policies on ethical conduct and integrity
Self-reflection	<ul style="list-style-type: none"> Seeks and accepts feedback Demonstrates self-reflection with insight on challenges and strategies Applies feedback to improve own work or behavior 	<ul style="list-style-type: none"> Accepts instructor feedback Demonstrates self-reflection with attempt to identify challenges and strategies Attempts to apply feedback to improve own work or behavior 	<ul style="list-style-type: none"> Resists or becomes defensive to feedback Demonstrates minimal awareness of challenges and strategies Blames others or situation for outcomes Does not apply feedback to work or behavior
Motivation and Grit	<ul style="list-style-type: none"> Demonstrates perseverance and drive to succeed Applies effort to overcome challenges Encourages others to stay motivated and persevere 	<ul style="list-style-type: none"> Requires support from others to stay motivated Becomes distracted from goals when stressed Rebounds toward goal with minimal assistance 	<ul style="list-style-type: none"> Demonstrates minimal perseverance or internal motivation to reach goals Remains distracted during challenging situations Blames others or circumstances for outcomes
Use of Electronic Devices	<ul style="list-style-type: none"> Cell phone is off or silent and put away during learning activities Uses cell phone, computer, or tablet for relevant learning activities only Notifies faculty re: need for cell phone access during emergency situation 	<ul style="list-style-type: none"> Cell phone is put away during learning activities but buzzes or rings Uses cell phone during emergency situation without notifying faculty 	<ul style="list-style-type: none"> Uses cell phone, computer, or tablet during learning activity for unrelated purpose Distractions peers or learning activity with use of cell phone, computer, or tablet Repeatedly leaves cell phone on during learning activities

**Plymouth State University
Nursing Program
Clinical Remediation Referral**

STUDENT NAME	
CLINICAL COURSE	
CLINICAL AGENCY	ROTATION DATES

The Nursing Remediation Program is in place to support students in meeting clinical competencies. Currently, your performance indicates that you are not meeting the clinical competency stated below at a developing level (see Clinical Evaluation Instrument). Failure to meet the clinical competencies for this course may result in a grade of non-pass. For this reason, you are being referred to the Skills/Simulation Lab for remediation.

Student Responsibility: You must contact the Clinical Course Coordinator within 48 hours of this notice to set up a time for remediation. You should come to remediation prepared having reviewed the appropriate information in your skills book (including reviewing appropriate skills checklists), medical/surgical text, or medication reference text. Bring this form to the remediation session with you. **Your Clinical Course Coordinator is:**

CLINICAL COMPETENCY(S) NOT BEING MET	
SPECIFIC SKILL(S) TO BE REMEDIATED	

Referring Instructor's Signature and Date

Student's Signature and Date

Please attach copies of any pertinent documents discussing student performance to this form

This section should be used for student reflection and faculty evaluation after remediation is completed

REMEDATION DATE(S)	
STUDENT SELF-EVALUATION	
INSTRUCTOR FEEDBACK	

Section VI. Student Acknowledgement
Student Acknowledgment of the 2025-2026
PSU Nursing Student Handbook

I acknowledge that it is my responsibility to read, review, and abide by the policies in the Plymouth State University Nursing Student Handbook.

Student Name (print) _____

Student Signature _____

Date _____